



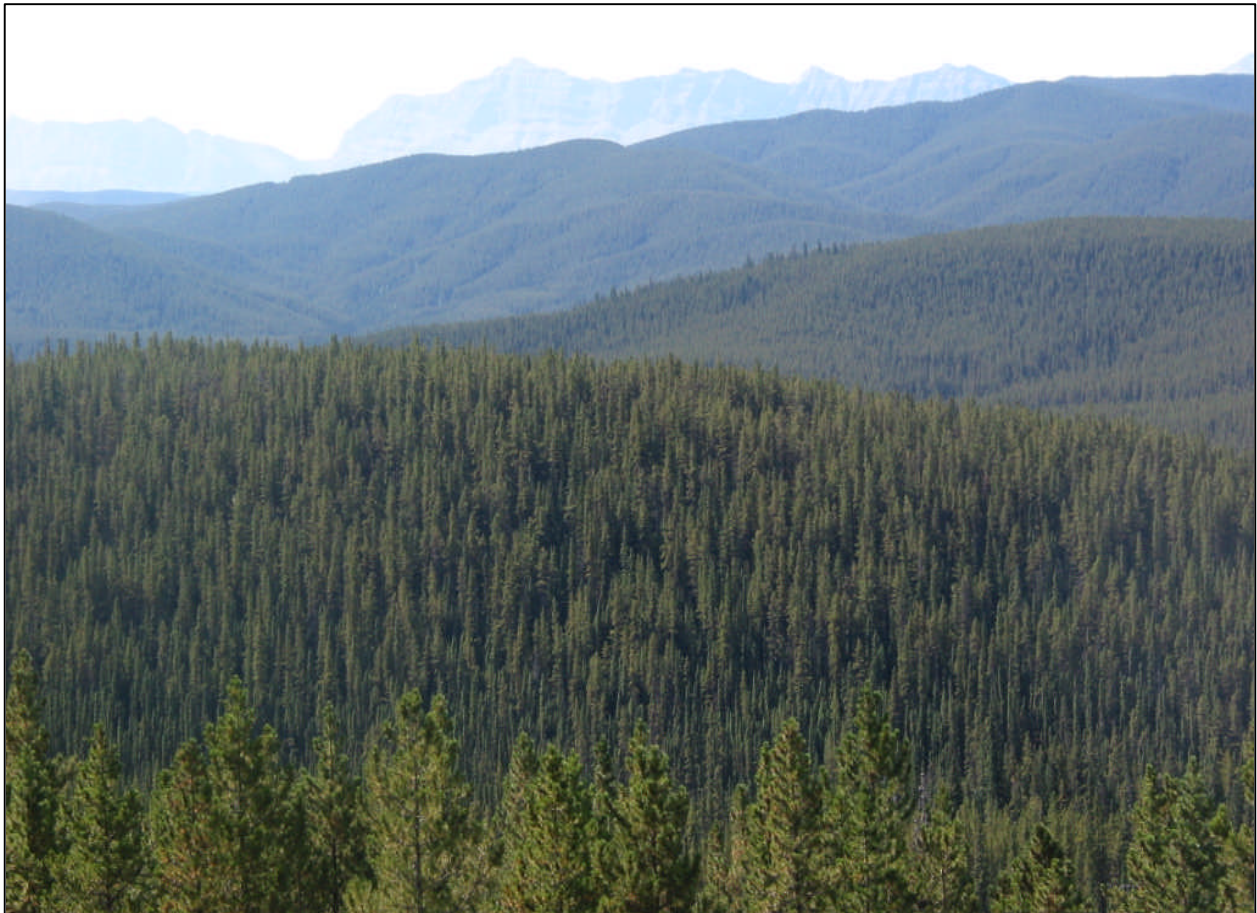
**Edson Forest Products**

A division of West Fraser Mills Ltd.

## **Woodlands**

# **2015 Annual Operating Plan**

FMA9700032 and CTQR130004



31 March 2015

Graham Legaarden  
Senior Forester  
Upper Athabasca Region  
Alberta Environment and Sustainable Resource Development  
3<sup>rd</sup> floor Civic Centre  
131 Civic Centre Road  
Hinton, AB T7V 2E6

**Re: 2015 Annual Operating Plan FMA9700032 and CTQR130004**

---

Enclosed for your view and approval is the 2015 Annual Operating Plan (AOP) for Edson Forest Products. This AOP is consistent with the protocols established in the 2014 Operating Ground Rules.

The column titled "FHP Stage" in the AOP Schedule (Appendix 2) includes only blocks that have received FHP approval. To meet business needs, it is expected that additional blocks will be designed or redesigned and amended into this AOP as required.

Operations under the 2014 AOP are still in progress and are expected to continue until approximately April 30, 2015.

Approval of this AOP by April 30, 2015 would allow us to make arrangements for ongoing operations as of May 1, 2015. It is anticipated that processing and haul activities will continue through the change in timber year and that harvest operations will commence in June.

Please contact me at 780-865-8181 if you have any questions.

Sincerely,



Pat Golec  
Forestry Manager

cc: Bruce Alexander  
Richard Briand  
Diane Renaud

## Woodlands

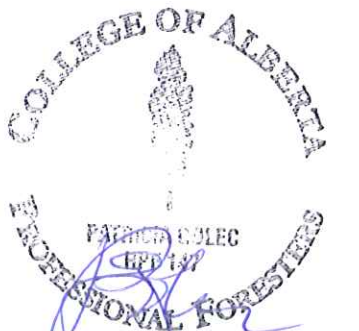
# 2015 Annual Operating Plan

FMA9700032 and CTQR130004

---

**For the Period May 1, 2015 to April 30, 2016**

This Annual Operating Plan includes all harvest activity proposed for the 2015 Timber year.  
The 2015 Silviculture Schedule will be submitted separately.



Pat Golec  
Forestry Manager



Bruce Alexander  
Woodlands Manager

**March 31, 2015**

## INTRODUCTION

The Annual Operating Plan (AOP) describes when and where operations will be implemented on the Edson Forest Products (EFP) Forest Management Agreement (FMA) area. This AOP schedules harvest operations including timber harvest, road construction, road use, and reclamation planned for the 2015 Timber Year (May 1, 2015 – April 30, 2016) within Forest Management Agreement 9700032 (Order in Council 564/2007) and CTQR130004 managed by Edson Forest Products, a Division of West Fraser Mills Ltd. Approval of the AOP provides the authority to undertake harvest and road activities according to the schedules listed within this document. This document also contains a listing of all cutblocks that have Final Harvest Plan (FHP) approval and may be harvested in the current Timber Year.

The majority of the coniferous volume harvested from the FMA will be delivered to Yellowhead County for use by Edson Forest Products (sawmill), SW10-53-18W5. Small amounts of coniferous volume will be delivered to outside companies, including Hinton Wood Products in Hinton, Blue Ridge Lumber in Blue Ridge, Alberta Plywood in Slave Lake, Sundre Forest Products in Sundre and the Brisco Wood Preservers Ltd. production facility in Peers, AB. Deciduous volume harvested from the FMA will be delivered to the Weyerhaeuser Company OSB mill in Edson.

The Forest Management Plan approved for Sundance Forest Industries Ltd. in 2009 contains a 20-year Spatial Harvest Sequence (SHS) that became effective May 1, 2007. The SHS targets pine stands susceptible to MPB and deciduous stands to meet contract sales needs. This AOP includes blocks that were designed from the outset to meet MPB stand criteria.

This report was produced using data from the EFP spatial database management system, CengeaForest™TheForestManager.

## HARVEST PLANNING

Harvest design and management tactics for individual blocks are defined and approved through the SHS and FHP process. Higher-level environmental concerns and other resource values are addressed at the SHS planning stage and more site-specific values are addressed at the FHP planning stage. Final Harvest Plans are approved for five consecutive Timber Years following the year of approval. During this time, blocks listed in the FHP may be scheduled for harvest in the AOP.

### Block Availability for Harvest

Upon approval of the AOP, all blocks scheduled in this Timber Year are available for harvest at EFP's discretion (Appendix 2 – Operating Schedule). Appendix 1 includes a description of the fields used in the Operating Schedules.

This year, the AOP and Silviculture Schedule are being submitted separately. To bridge the two documents, approval is requested to undertake site preparation on all approved blocks.

Changes to the proposed harvest schedule may become necessary because of mountain pine beetle activity, weather, log profile requirements, facility downtime, purchase wood fluctuations and opportunities, business and market conditions, government requests, changes in logging methods, forest fire, or other unforeseen circumstances affecting the assumptions under which this plan was created. Requests to harvest blocks not included in this AOP will be made through a letter of amendment request to Alberta. Approval of a letter of amendment provides the authority to carry out harvest operations in the blocks under the terms and conditions of the FHP approval.

### Contingency Blocks

Contingency blocks are all-weather blocks situated adjacent to all-weather Class 2 or 3 roads. In the event that unforeseen circumstances or operating conditions prevent accessing the blocks listed for this Timber Year, a list of contingency blocks has been provided (Appendix 4 – Contingency Wood). Contingency blocks have been included in this plan for AOP approval so that they are readily available for harvest however. Block numbers and volumes are also shown in the Operating Schedule.

## Re-scheduled Blocks

Harvest operations for the 2014 Timber Year were not completed prior to the submission of this AOP, so all blocks approved under the 2014 AOP that were not commenced as of March 15, 2015 or were commenced but not haul cleared as of March 15, 2015 have been carried forward to this AOP.

## Compartment Assessment

Compartment Assessments are a component of the planning process that may be requested by Alberta, as described in the 2014 OGR. At present, there are no Compartment Assessments for the FMA.

## Final Harvest Plan

EFP must apply for FHP re-approval for all remaining blocks that were not harvested within the five year window. The approved FHP associated with each block is included as part of Appendix 2: Operating Schedule. For plans less than 5 years old, un-harvested blocks that meet pine management criteria are either included in the AOP or may be proposed for harvest through the AOP amendment process. All blocks that do not meet pine management criteria have either been deleted or the block information was archived for future reference.

## Cutover

Cutover reconciliation for the 2013 Operating Year was submitted in December 2014. Cutover reconciliation for the 2014 Operating Year will be submitted prior to December 31, 2015.

## ANNUAL ALLOWABLE CUT AND UTILIZATION

Operating practices will be consistent with utilization specifications defined in the Operating Ground Rules and the amendments described below. The annual allowable cut was determined using the following utilization standards:

### Conifer

- 15.0 cm stump height
- minimum 15.0 cm diameter outside bark at stump height
- minimum 11.0 cm top diameter inside bark
- minimum log length of 3.84m.

### Deciduous

- 15.0 cm stump height
- minimum 15.0 cm diameter outside bark at stump height
- minimum 10.0 cm top diameter inside bark
- cut-to-length with a minimum length of 2.49 m

Under these utilization specifications, EFP is not obliged to produce and utilize pulpwood from the FMA. In the event that pulpwood is utilized, it is not charged against the AAC.

The approved Annual Allowable Cuts are as follows:

<b>FMA Conifer</b>	795,129 m <sup>3</sup>
<b>CTQ Conifer</b>	14,974 m <sup>3</sup>
<b>FMA Deciduous</b>	52,926 m <sup>3</sup>

The approved coniferous and deciduous reconciliation volumes from Quadrant 3 have been harvested.

The current operating ground rules for the Edson FMA became effective on March 11, 2014.

## VOLUMES

The block volumes and subsequent volume summaries contained within this document are derived from the Detailed Volume Tables (DVT) and based on tree length volumes.

Appendix 3 – Volume Summary summarizes the total volume available for the Operating Year. EFP currently intends to harvest one half of the remaining QAC volumes for FMA9700032 in each of the next 2 years as well as the balance of the conifer volume for CTQR130004. Targets are 1,698,281 m<sup>3</sup> conifer and 76,193 m<sup>3</sup> deciduous for the 2015/16 timber year. These amounts include industrial salvage volume.

Although this AOP represents current harvest plans, ongoing changes related to the MPB strategy may make it necessary to not harvest some approved blocks and add additional volume, which will be amended into the AOP as new FHP and/or redesigned/new blocks are approved.

## PUBLIC INVOLVEMENT

The EFP public consultation program promotes dialogue between the public and the Woodlands Department. The objectives are:

1. Provide opportunities for the public to express their interests and concerns about planning and operations on the FMA area.
2. Use public input as a basis for making informed decisions in operational planning.
3. Keep the public informed on developments in operational planning and implementation.
4. Provide increased communication between the Woodlands Department and the public.
5. Promote increased awareness by the public about forest resource management.

The main elements of the public involvement program are:

1. An advisory committee consisting of local interests (Public Advisory Committee).
2. Public notification of the initiation of harvest plans with a request for input.
3. Annual open houses in local communities.
4. A toll-free number (1-800-293-6955) for questions and comments from the public.
5. A West Fraser website ([www.westfraser.com](http://www.westfraser.com)), which contains Woodlands Department information. This includes a copy of the AOP and the Sustainable Forest Management Plan. The site has an e-mail address that the public can use to provide feedback to EFP.
6. A Summary Document that shows the proposed compartments that harvesting will occur in addition to proposed chemical and mechanical tending blocks. The current Summary Document formed the basis for our GDP public and Aboriginal Consultation processes.

Other opportunities are provided to involve the public in the planning process. Periodic open houses are scheduled to address specific compartment operating plans. During these open houses, feedback and comments on the plan are solicited from the public.

## Notifications

Communications about block design with Registered Fur Management Area holders were completed for all AOP blocks as part of the harvest planning process. Notification of pending operations will be completed prior to harvest as per the Operating Ground Rules.

There are no planned operations overlapping with grazing disposition holders in this year.

## ABORIGINAL ENGAGEMENT

There is no provincial requirement for forest companies to refer the AOP to Aboriginal communities for consultation. Aboriginal engagement, as outlined in the Alberta First Nations Consultation Guidelines on Land Management and Resource Development is to take place at the General Development Plan (GDP) and Forest Management Plan (FMP) level.

Aboriginal communities that EFP is required to consult have had the opportunity to provide input on all areas to be harvested under this AOP as part of the GDP Aboriginal engagement process. Any compartments amended into this AOP that have not already gone through the GDP referral process will first go through a separate process. A summary of Aboriginal feedback, issues, and any mitigation measures related to the GDP will be included with the GDP submission.

## HISTORICAL RESOURCES

All AOP blocks have either already been cleared for compliance with the Historical Resources Act or will be cleared prior to commencement of operations.

## HARVEST SYSTEMS

EFP currently uses a roadside processing system. In this system, trees are felled by feller-bunchers and skidded to roadside for processing, where they are cut into bolts and sorted for various products. The sorted bolts are loaded onto trucks and hauled to the appropriate manufacturing facility. Limbs and tops from roadside systems are piled for future burning.

### Loading and Hauling

Contractors load and haul all harvested wood. Logs are loaded onto log trucks using either a loader or self-loading picker trucks. When road conditions are soft, reduced loads are taken from spur roads and topped off on all weather roads. Most wood from the FMA is hauled with on-highway trucks. Each load is weighed at the scale of the mill accepting delivery of the fibre.

## ROADS

The AOP road schedule (Appendix 5) includes the EFP road number, the road class, and whether the road will have construction (this includes crossing installation/removal), harvesting, haul, maintenance, and/or reclamation during the period covered by the AOP. Approval is requested to conduct AOP road operations on AOP roads in the schedule as needed. AOP amendment requests will be submitted for proposed operations on AOP roads that are not included on the schedule.

All AOP roads that will have operations related to the road (i.e. ROW harvest, construction, haul, deactivation, stream crossings work, and reclamation) are included in the AOP Road Schedule. Temporary class 5 and 6 roads will typically only be constructed when the associated block is to be harvested. Crossings of channelled watercourses associated with an AOP road will typically be operated in conjunction with the associated road. The status of all AOP roads on the FMA is tracked as part of the monthly block status submission.

All future class 2, 3 and 4 roads will be applied for under DLO. The location of Class 5 roads are approved through the respective FHP.

## SALVAGE

Most non-EFP development on the FMA relates to the oil and gas industry and the coal industry. Subject to economic constraints, EFP requires salvage of all timber associated with dispositions from all companies conducting business on the FMA.

EFP periodically delivers firewood to supply EFP managed recreation areas and other sites/organizations that EFP donates firewood to. Firewood may include deciduous, dead conifer, and non-merchantable conifer. The current list of sites that firewood may be supplied to is: Emerson Lakes PRA, Fairfax Lake PRA, Gregg Cabin Recreation Area, Hamlet of Brule, Little Sundance PRA, Elk River PRA, Kinky Lake PRA, Wildhorse Lake PRA, Brown Creek PRA, Brazeau PRA, Lovett River PRA, Obed PRA, McLeod River PRA, McLeod Group PRA, Pembina Forks, PRA, Petite Lake Recreation Area, Rock Lake PRA, Watson Creek PRA, Whitehorse Creek PRA, Willow/Wildhay Recreation Area, and Wildhay Group PRA.

## ENDANGERED TIMBER

Endangered timber (blowdown, insect, disease, fire, etc.) will be evaluated for salvage opportunity as required. Approval will be requested separately for marginal coniferous saw timber dues for all timber salvaged. All volume proposed for salvage will be identified and approved in advance, and authority for harvest will be through AOP amendment. EFP intends to salvage all economically accessible MPB attacked timber. At present, harvesting any other salvage areas is not anticipated for this timber year.

## RESEARCH

EFP will continue to be involved in the implementation, monitoring and protection of numerous on-going research projects being conducted by the Woodlands Department and other organizations including the Foothills Research Institute, FPIInnovations, universities, and the Canadian Forest Service.

## FIRE CONTROL PLAN

Forest Protection measures will be carried out in accordance with the Forest and Prairie Protection Act and Regulations Part I and II, Section 26 of the Forest Management Agreement (O.C. 564/2007), the Fire Control Agreement and the Fire Control Plan. Fire fighting equipment will be on hand and maintained as prescribed in the Forest and Prairie Protection Act and Regulations Part I and II, and the Fire Control Plan.

The Fire Control Plan process meets requirements in the Forest Management Agreement, which took effect on May 28, 2008. The Fire Control Plan for the current timber year was previously submitted 23 February 2015.



## APPENDIX 1: OPERATING SCHEDULE REFERENCE

**WORKING CIRCLE** – The Hinton FMA area is divided into 5 working circles. For operational planning, the Edson FMA area has been named as the Sundance Working Circle, number 6. This allows consistency when contractors are moving between the two FMA areas.

**COMPARTMENT** – the Compartment number within the specified working circle. The format is Working Circle – Compartment (e.g. 6-15 is Sundance 15)

**LAST FHP#** – the name of the last approved FHP. The format is Working Circle – Compartment – Year planning was initiated and plan.

**BLOCK** – the block number. The format is Working Circle – Compartment – Block Number (e.g. 6-09-0199 is Sundance 9 Block 199).

**OPENING#** – the unique block identifier (character string based on legal land description (ATS)) used to identify a block in reports and data submitted to Alberta.

**BLK AREA (ha)** – the total operable area in hectares of the block.

**FHP#** – the Final Harvest Plan the block under which the block was approved.

**FHP STAGE** – all blocks in the AOP Operating Schedule have received FHP approval. This column indicates blocks that have been approved and no changes are planned at this time.

**TACTIC** – the reforestation tactic planned to achieve satisfactory regeneration.

Tactic Identification	Reforestation Tactic Description
LFN-R	Leave for natural reforestation (root suckering)
LFN-S	Leave for natural reforestation (seed)
NSP	Planting with no site preparation
OTH	Other
SFN	Scarify and leave for natural seed
SFN-P	Scarify and leave for natural seed and plant
SPP	Site preparation and planting
SPS	Site preparation followed by artificial seeding

**SEASON** – the general block ground condition derived from ecological overlays. Blocks are grouped in each compartment by Summer (S), Winter (W) and Marginal (M) categories.

**STRATEGY** – the silviculture system (ARIS opening type code) to be used to harvest the block.

Strategy Identification	Strategy/Silviculture System Description
CC	Clearcut
CM	Clearcut - Mountain pine beetle
CW	Clearcut - Blowdown
FS	FireSmart - Forest protection objectives
PC	Partial Cut (i.e. Shelterwood)
SG	Selective Group Cut
SL	Selective Single Tree Cut
SM	Salvage cut after wildfire
ST	Sanitation Cut
TC	Commercial Thin

**CONIFER VOL (m<sup>3</sup>)** – the gross conifer (softwood) volume (m<sup>3</sup>) contained within the block.

**DECID VOL (m<sup>3</sup>)** – the gross deciduous (hardwood) volume (m<sup>3</sup>) contained within the block.

## APPENDIX 2: OPERATING SCHEDULE

Available Blocks For the period from 5/1/2015 to 4/30/2016 (revised 14 April 2015)

Block	Opening #	Area (ha)	FHP #	FHP Stage	Tactic	Season	Strategy	Conifer m³	Decid m³
6-002-2278	5170432278	13.16	FHP 2-01 - Amendment 2	Approved	SFN-P	S-W	CC	3,112	125
6-002-2475	5170432475	32.04	FHP 2-01 - Amendment 2	Approved	NSP	S-W	CC	7,817	451
6-002-2526	5170432526	38.03	FHP 2-01 - Amendment 2	Approved	NSP	S-W	CC	8,853	444
6-002-2602	5170432602	101.81	FHP 2-01 - Amendment 2	Approved	SFN-P	S-W	CC	24,850	1,349
6-002-2606	5170432606	3.23	FHP 2-01 - Amendment 2	Approved	SFN-P	S	CC	792	44
6-002-2655	5170432655	55.17	FHP 2-01 - Amendment 2	Approved	NSP	S	CC	13,062	535
6-002-3531	5170433521	30.79	FHP 2-01 - Amendment 2	Approved	SFN-P	S	CC	12,930	252
6-004-0123	5170450123	65.71	FHP_Sun04_2014-03	Approved	SFN-P	S	CC	17,751	1,120
6-004-0171	5170450171	38.88	FHP_Sun04_2014-03	Approved	SFN-P	S	CC	8,869	401
6-004-0219	5170450219	57.04	FHP_Sun04_2014-03	Approved	SFN-P	S	CC	12,414	1,332
6-004-0242	5170450242	42.67	FHP_Sun04_2014-03	Approved	SFN-P	S	CC	10,392	790
6-004-0297	5170450297	43.12	FHP_Sun04_2014-03	Approved	SFN-P	S	CC	9,863	504
6-004-0364	5170450364	57.66	FHP_Sun04_2014-03	Approved	SFN-P	S	CC	13,250	753
6-004-0471	5170450471	49.20	FHP_Sun04_2014-03	Approved	SFN-P	S	CC	13,169	896
6-004-0521	5160450521	7.79	FHP_Sun04_2014-03	Approved	SFN-P	S	CC	2,106	120
6-004-0551	5160450551	18.79	FHP_Sun04_2014-03	Approved	SFN-P	S	CC	4,601	349
6-004-0635	5160450635	19.22	FHP_Sun04_2014-03	Approved	SFN-P	S	CC	4,475	211
6-004-0693	5160450693	10.29	FHP_Sun04_2014-03	Approved	SFN-P	S	CC	2,744	160
6-004-1040	5170451040	19.64	FHP_Sun04_2014-03	Approved	SFN-P	S	CC	4,422	282
6-004-1095	5170451095	84.05	FHP_Sun04_2014-03	Approved	SFN-P	S	CC	19,119	1,210
6-004-1182	5170451182	51.52	FHP_Sun04_2014-03	Approved	SFN-P	S	CC	11,031	781
6-004-1232	5170451232	70.50	FHP_Sun04_2014-03	Approved	SFN-P	S	CC	16,161	674
6-004-2279	5170442779	12.85	FHP_Sun04_2014-03	Approved	SFN-P	S	CC	2,742	167
6-004-3109	5160443109	26.48	FHP_Sun04_2014-03	Approved	SFN-P	S	CC	6,036	263
6-004-3175	5160443175	22.25	FHP_Sun04_2014-03	Approved	SFN-P	S	CC	4,917	188
6-004-3178	5160443178	9.51	FHP_Sun04_2014-03	Approved	SFN-P	S	CC	2,108	92
6-004-3243	5160443243	18.65	FHP_Sun04_2014-03	Approved	SFN-P	S-M	CC	4,702	227
6-004-3266	5160443266	12.67	FHP_Sun04_2014-03	Approved	SFN-P	S-M	CC	2,792	134
6-004-3455	5170443455	9.98	FHP_Sun04_2014-03	Approved	SFN-P	S-M	CC	2,478	367
6-004-3503	5170443503	10.27	FHP_Sun04_2014-03	Approved	SFN-P	M	CC	2,690	227
6-004-3526	5170443526	143.31	FHP_Sun04_2014-03	Approved	SFN-P	S	CC	32,013	2,290
6-005-0427	5170440427	92.42	FHP 5-01 - Amendment 2	Approved	SFN-P	S	CC	20,645	1,030
6-005-0599	5170440599	65.23	FHP 5-01 - Amendment 2	Approved	SFN-P	S	CC	14,970	645
6-005-1791	5170441791	34.59	FHP 5-01 - Amendment 2	Approved	SFN-P	S	CC	8,200	368
6-006-0225	5180450225	11.64	FHP 6-01 - Amendment 2	Approved	SFN-P	S	CC	2,542	121
6-006-1028	5180451028	35.55	FHP 6-01 - Amendment 2	Approved	SFN-P	S	CC	8,217	395
6-006-1248	5180451248	7.21	FHP 6-01 - Amendment 2	Approved	SFN-P	S	CC	1,557	79
6-006-1322	5180451322	3.95	FHP 6-01 - Amendment 2	Approved	SFN-P	S	CC	863	41
6-006-1373	5180451373	67.50	FHP 6-01 - Amendment 2	Approved	SFN-P	S	CC	14,612	747
6-007-1741	5180451741	8.92	FHP 7-03 - Amendment 2	Approved	SFN-P	S	CC	2,426	193
6-007-2686	5190452686	36.08	FHP 7-02 - Amendment 2	Approved	NSP	S	CC	8,354	173
6-008-0430	5170470430	2.47	FHP 8-02 - Amendment 2	Approved	NSP	W	CC	494	57
6-008-0444	5170470444	8.95	FHP 8-02 - Amendment 2	Approved	NSP	W	CC	2,160	128
6-008-0542	5170470542	44.69	FHP 8-02 - Amendment 2	Approved	SFN-P	W	CC	10,276	668
6-008-1713	5170461713	13.23	FHP 8-02 - Amendment 2	Approved	SFN-P	W	CC	3,010	203
6-008-2905	5170462905	7.14	FHP 8-02 - Amendment 2	Approved	SFN-P	W	CC	1,559	83
6-008-3076	5170463076	4.89	FHP 8-02 - Amendment 2	Approved	SFN-P	S	CC	1,106	47
6-008-3157	5170463157	26.56	FHP 8-02 - Amendment 2	Approved	SFN-P	W	CC	6,021	305
6-008-3195	5170463195	3.05	FHP 8-02 - Amendment 2	Approved	SFN-P	W	CC	712	28
6-008-3218	5170463218	14.64	FHP 8-02 - Amendment 2	Approved	NSP	W	CC	3,356	238
6-008-3230	5170463230	24.35	FHP 8-02 - Amendment 2	Approved	SFN-P	W	CC	5,523	256
6-008-3246	5170463246	21.57	FHP 8-02 - Amendment 2	Approved	NSP	W	CC	5,077	311
6-009-0190	5150460190	43.13	FHP 9-08	Approved	SFN-P	W-M	CC	11,203	1,270
6-009-0652	5150460652	4.40	FHP 9-08	Approved	SFN-P	W-M	CC	1,027	42
6-009-0663	5150460663	12.01	FHP 9-08	Approved	SFN-P	W	CC	3,239	200
6-009-0783	5160450783	19.76	FHP 9-02 - Amendment 2	Approved	SFN-P	W	CC	4,021	799
6-009-0861	5160450861	18.82	FHP 9-02 - Amendment 2	Approved	SFN-P	W	CC	4,389	366
6-009-1064	5160461064	29.72	FHP 9-08	Approved	SFN-P	W-M	CC	7,278	452
6-009-1217	5160461217	20.78	FHP 9-08	Approved	SFN-P	W-M	CC	4,767	924
6-009-1248	5160461248	43.97	FHP 9-08	Approved	SFN-P	W-M	CC	10,601	1,365
6-009-1393	5160461393	59.06	FHP 9-08	Approved	SFN-P	W	CC	14,130	1,159
6-009-2623	5170452623	10.81	FHP 9-07	Approved	SFN-P	S-M	CC	2,794	205
6-009-2638	5170452638	16.41	FHP 9-07	Approved	SFN-P	S-M	CC	4,296	324
6-009-2665	5170452665	24.21	FHP 9-07	Approved	SFN-P	M	CC	5,673	723
6-009-2684	5170452684	16.31	FHP 9-07	Approved	SFN-P	M	CC	4,065	531
6-009-2779	5170452779	42.42	FHP 9-07	Approved	SFN-P	S-M	CC	10,476	857
6-009-3149	5150453149	9.34	FHP 9-08	Approved	SFN-P	S-M	CC	2,580	159
6-009-3369	5170453369	74.02	FHP 9-06 - Amendment 2	Approved	SFN-P	S	CC	20,260	1,265
6-009-3422	5170453422	17.71	FHP 9-07	Approved	SFN-P	S-M	CC	4,865	321
6-009-3607	5160453607	29.28	FHP 9-08	Approved	SFN-P	W	CC	7,057	588
6-009-3646	5160453646	10.00	FHP 9-08	Approved	SFN-P	W-M	CC	2,297	83

Block	Opening #	Area (ha)	FHP #	FHP Stage	Tactic	Season	Strategy	Conifer m <sup>3</sup>	Decid m <sup>3</sup>
6-010-1788	5160451788	17.15	FHP 10-04 - Amendment	Approved	SFN-P	S	CC	4,199	235
6-010-3521	5160453521	10.19	FHP 10-01 - Amendment	Approved	SFN-P	W	CC	2,311	93
6-011-0438	5140450438	35.17	FHP 11-02 - Amendment	Approved	SFN-P	W	CC	8,057	1,483
6-011-0477	5140450477	23.45	FHP 11-02 - Amendment	Approved	LFN-R	W	CC	3,050	2,979
6-011-0883	5140450883	22.63	FHP 11-02 - Amendment	Approved	SFN-P	W	CC	3,840	2,188
6-011-1068	5140451068	25.14	FHP 11-03 - Amendment	Approved	LFN-R	S	CC	3,314	3,015
6-011-1815	5140451815	12.49	FHP 11-01 - Amendment	Approved	LFN-R	W	CC	1,635	1,639
6-011-1834	5140451834	15.38	FHP 11-01 - Amendment	Approved	SFN-P	W	CC	3,282	574
6-012-0398	5130450398	8.04	FHP 12-02	Approved	SFN-P	S	CC	1,833	89
6-012-1508	5130451508	7.88	FHP 12-02	Approved	SFN-P	S	CC	1,803	86
6-012-2503	5130452503	6.58	FHP 12-02	Approved	SPP	S-W	CC	1,448	675
6-012-2924	5120452924	8.26	FHP 12-01 - Amendment	Approved	SPP	S	CC	2,133	164
6-012-2991	5120452991	25.75	FHP 12-01 - Amendment	Approved	SPP	W	CC	6,795	416
6-012-3029	5120453029	20.50	FHP 12-01 - Amendment	Approved	NSP	W	CC	5,392	361
6-013-0146	5140460146	43.60	FHP_SUN13_2015-03	Approved	SFN-P	S-M	CC	12,064	739
6-013-0188	5150460188	5.57	FHP_Sun13_2014-07	Approved	SFN-P	S-M	CC	1,327	294
6-013-0191	5150460191	38.35	FHP_Sun13_2014-07	Approved	SFN-P	S-M	CC	9,258	869
6-013-0300	5140460300	23.19	FHP_Sun13_2014-07	Approved	SFN-P	W	CC	5,703	755
6-013-0507	5140460507	29.82	FHP_Sun13_2014-07	Approved	SFN-P	W-M	CC	6,389	252
6-013-0539	5140460539	21.35	FHP_Sun13_2014-07	Approved	SFN-P	W-M	CC	3,744	837
6-013-0618	5140460618	9.86	FHP_Sun13_2014-07	Approved	SFN-P	S	CC	2,256	102
6-013-0649	5140460649	9.78	FHP_Sun13_2014-07	Approved	SFN-P	S	CC	2,123	132
6-013-0651	5140460651	24.72	FHP_Sun13_2014-07	Approved	SFN-P	M	CC	5,828	294
6-013-0708	5130460708	6.76	FHP_SUN13_2015-03	Approved	SFN-P	S-M	CC	1,569	68
6-013-0745	5140460745	9.08	FHP_Sun13_2014-07	Approved	SFN-P	S-M	CC	2,462	173
6-013-1226	5140461226	74.83	FHP_SUN13_2015-03	Approved	SFN-P	S-M	CC	18,467	1,319
6-013-1316	5140461316	9.68	FHP_SUN13_2015-03	Approved	SFN-P	S	CC	2,693	164
6-013-1497	5140451497	6.36	FHP 13-03 - Amendment	Approved	SFN-P	W	CC	1,439	72
6-013-1627	5130451626	12.48	FHP_SUN13_2015-03	Approved	SFN-P	W	CC	3,160	211
6-013-1647	5130451646	6.75	FHP_SUN13_2015-03	Approved	SFN-P	S	CC	1,607	342
6-013-1675	5130451675	20.08	FHP_SUN13_2015-03	Approved	SFN-P	S-M	CC	4,583	219
6-013-1803	5130451803	37.55	FHP 13-03 - Amendment	Approved	SFN-P	W	CC	8,698	345
6-013-1959	5130451959	7.84	FHP 13-07	Approved	SFN-P	W	CC	1,697	233
6-013-1965	5130451965	10.43	FHP 13-07	Approved	SFN-P	S	CC	2,625	187
6-013-1978	5130451978	10.15	FHP 13-07	Approved	SFN-P	S	CC	2,291	337
6-013-1984	5130451984	16.45	FHP 13-07	Approved	SFN-P	S	CC	4,020	329
6-013-2069	5140452069	6.00	FHP 13-02 - Amendment	Approved	SFN-P	S	CC	1,325	260
6-013-2108	5140452108	7.23	FHP 13-02 - Amendment	Approved	LFN-R	S	CC	945	937
6-013-2128	5140452128	5.56	FHP 13-02 - Amendment	Approved	LFN-R	S	CC	710	660
6-013-2148	5130452148	9.93	FHP_SUN13_2015-03	Approved	SFN-P	S	CC	2,633	336
6-013-2239	5140452239	6.10	FHP 13-03 - Amendment	Approved	SFN-P	W	CC	1,621	139
6-013-2339	5150452339	22.38	FHP_Sun13_2014-07	Approved	SFN-P	S	CC	5,848	555
6-013-2358	5140452358	6.17	FHP_Sun13_2014-07	Approved	SFN-P	S	CC	1,261	527
6-013-2386	5140452386	4.86	FHP_Sun13_2014-07	Approved	SFN-P	S-M	CC	868	535
6-013-2393	5140452393	10.25	FHP 13-03 - Amendment	Approved	NSP	S	CC	2,273	213
6-013-2394	5140452394	11.31	FHP 13-03 - Amendment	Approved	LFN-R	S	CC	1,988	1,286
6-013-2406	5140452406	25.39	FHP_Sun13_2014-07	Approved	SFN-P	M	CC	5,929	383
6-013-2551	5150452551	31.26	FHP_Sun13_2014-07	Approved	SFN-P	W	CC	5,792	2,108
6-013-2643	5150452643	30.87	FHP_Sun13_2014-07	Approved	SFN-P	S-M	CC	8,306	748
6-013-2668	5150452668	39.28	FHP_Sun13_2014-07	Approved	SFN-P	S-M	CC	8,729	2,468
6-013-2713	5140452713	17.95	FHP_Sun13_2014-07	Approved	SFN-P	S	CC	3,814	1,372
6-013-2764	5140452764	23.72	FHP_Sun13_2014-07	Approved	SFN-P	S-M	CC	6,063	996
6-013-2778	5140452778	13.03	FHP 13-03 - Amendment	Approved	SPP	W	CC	2,506	983
6-013-2800	5140452800	5.38	FHP 13-03 - Amendment	Approved	SPP	S	CC	871	525
6-013-2812	5130452812	9.57	FHP_SUN13_2015-03	Approved	SFN-P	S	CC	2,707	540
6-013-2819	5130452819	46.18	FHP_SUN13_2015-03	Approved	SFN-P	S	CC	10,106	2,766
6-013-2917	5140452917	23.91	FHP_Sun13_2014-07	Approved	SFN-P	M	CC	6,184	1,151
6-013-2924	5140452924	3.28	FHP_Sun13_2014-07	Approved	SFN-P	S	CC	780	154
6-013-2926	5130452926	66.73	FHP 13-07	Approved	SFN-P	S-W	CC	15,871	3,030
6-013-2948	5130452948	3.93	FHP 13-07	Approved	SFN-P	S	CC	926	38
6-013-3015	5140453015	26.20	FHP_Sun13_2014-07	Approved	SFN-P	W	CC	6,577	603
6-013-3044	5130453044	17.31	FHP 13-07	Approved	SFN-P	W	CC	4,618	334
6-013-3055	5140453055	5.42	FHP_Sun13_2014-07	Approved	SFN-P	W	CC	1,462	98
6-013-3064	5130453064	6.59	FHP 13-07	Approved	SFN-P	W	CC	1,413	95
6-013-3110	5140453110	4.95	FHP_Sun13_2014-07	Approved	SFN-P	M	CC	1,329	114
6-013-3134	5140453134	10.69	FHP 13-02 - Amendment	Approved	LFN-R	W	CC	1,498	1,956
6-013-3141	5140453141	21.39	FHP_Sun13_2014-07	Approved	SFN-P	S	CC	5,459	771
6-013-3147	5140453147	12.95	FHP_Sun13_2014-07	Approved	SFN-P	S	CC	3,394	276
6-013-3292	5130453291	70.29	FHP_SUN13_2015-03	Approved	SFN-P	S-M	CC	15,582	3,027
6-013-3378	5140453378	8.89	FHP_Sun13_2014-07	Approved	SFN-P	W	CC	2,418	173
6-013-3437	5140453437	30.28	FHP_Sun13_2014-07	Approved	SFN-P	W	CC	7,279	1,051
6-013-3467	5140453467	7.08	FHP_Sun13_2014-07	Approved	SFN-P	W	CC	1,626	377
6-013-3495	5150453495	10.28	FHP_Sun13_2014-07	Approved	SFN-P	M	CC	2,748	310

Block	Opening #	Area (ha)	FHP #	FHP Stage	Tactic	Season	Strategy	Conifer m <sup>3</sup>	Decid m <sup>3</sup>
6-013-3535	5150453535	12.42	FHP_Sun13_2014-07	Approved	SFN-P	M	CC	3,447	231
6-013-3592	5150453592	22.56	FHP_Sun13_2014-07	Approved	SFN-P	S	CC	4,462	1,874
6-013-3598	5150453598	15.10	FHP_Sun13_2014-07	Approved	SFN-P	W-M	CC	4,210	266
6-013-3664	5150453664	59.60	FHP_Sun13_2014-07	Approved	SFN-P	M	CC	14,486	2,276
6-014-2499	5140462499	4.43	FHP_SUN14_2014-05	Approved	SFN-P	S-M	CC	1,098	145
6-014-2552	5140462552	12.78	FHP_SUN14_2014-05	Approved	SFN-P	W	CC	2,926	266
6-014-2576	5140462576	15.17	FHP_SUN14_2014-05	Approved	SFN-P	W	CC	3,529	551
6-014-2584	5140462584	11.57	FHP_SUN14_2014-05	Approved	SFN-P	W	CC	2,774	430
6-014-2673	5140462673	9.54	FHP_SUN14_2014-05	Approved	SFN-P	W	CC	2,218	85
6-014-2677	5140462677	33.10	FHP_SUN14_2014-05	Approved	SFN-P	W-M	CC	7,271	688
6-015-1336	5170461336	16.29	FHP 15-04	Approved	SFN-P	S	CC	4,551	307
6-015-1499	5170461499	30.65	FHP 15-04	Approved	SFN-P	S	CC	7,767	488
6-015-1546	5170461546	14.33	FHP 15-05	Approved	SFN-P	S	CC	3,792	296
6-016-0414	5160480414	19.80	FHP 16-03	Approved	SFN-P	W	CC	4,815	274
6-016-0463	5160480463	8.54	FHP 16-03	Approved	SFN-P	W	CC	2,093	117
6-016-0718	5170470718	21.51	FHP 16-05	Approved	SFN-P	W	CC	4,772	219
6-016-0863	5160470863	28.04	FHP 16-05	Approved	SFN-P	W	CC	6,509	328
6-016-0886	5160480886	8.35	FHP 16-03	Approved	SFN-P	W	CC	1,805	89
6-016-0922	5160470922	5.28	FHP 16-05	Approved	SFN-P	W	CC	1,190	58
6-016-1333	5170471333	15.63	FHP 16-05	Approved	SFN-P	W	CC	3,311	167
6-016-1338	5170471338	31.71	FHP 16-05	Approved	SFN-P	W	CC	7,425	515
6-016-1439	5170471439	28.60	FHP 16-05	Approved	SFN-P	W	CC	6,294	414
6-016-1444	5170471444	21.06	FHP 16-05	Approved	SFN-P	W	CC	4,548	262
6-016-1475	5170471475	15.33	FHP 16-05	Approved	SFN-P	W	CC	3,277	158
6-016-1521	5170471521	16.03	FHP 16-04	Approved	SFN-P	S	CC	3,920	215
6-016-1547	5170471547	10.29	FHP 16-04	Approved	SFN-P	W	CC	2,381	80
6-016-1554	5170471554	2.52	FHP 16-04	Approved	SFN-P	W	CC	549	30
6-016-1581	5170471581	22.07	FHP 16-04	Approved	SFN-P	W	CC	5,338	301
6-016-1622	5160471622	33.11	FHP 16-05	Approved	SFN-P	W	CC	7,646	395
6-016-1742	5160471742	35.13	FHP 16-05	Approved	SFN-P	W	CC	8,046	426
6-016-1814	5160471814	10.29	FHP 16-05	Approved	SFN-P		CC	2,232	111
6-016-1870	5170471870	138.41	FHP 16-05	Approved	SFN-P	W	CC	30,651	1,594
6-016-1942	5160471942	78.78	FHP_Sun16_2014-09	Approved	SFN-P	W	CC	17,296	820
6-016-2127	5160472127	32.13	FHP 16-05	Approved	SFN-P	W	CC	7,436	323
6-016-2363	5170472363	37.30	FHP 16-05	Approved	SFN-P	W	CC	8,858	453
6-016-2412	5170472412	4.80	FHP 16-05	Approved	SFN-P	W	CC	1,069	52
6-016-2445	5170472445	28.90	FHP 16-05	Approved	SFN-P	W	CC	6,562	305
6-016-3040	5160473040	9.17	FHP_Sun16_2014-09	Approved	SFN-P	W	CC	2,085	89
6-016-3436	5160473436	32.31	FHP 16-03	Approved	SFN-P	W	CC	7,225	351
6-017-0119	5150470119	16.68	FHP 17-04 - Amendment	Approved	SPP	W	CC	3,325	1,287
6-017-2765	5150472765	68.25	FHP 17-07	Approved	SFN-P	S	CC	16,652	1,153
6-017-2862	5150472862	17.25	FHP 17-07	Approved	SFN-P	S-W	CC	4,055	363
6-017-2876	5150472876	21.69	FHP 17-07	Approved	SFN-P	S	CC	5,322	1,008
6-018-0897	5140480897	33.00	FHP 18-07	Approved	SFN-P	W	CC	9,177	728
6-018-1204	5150481204	18.12	FHP 18-04	Approved	SFN-P	W	CC	2,966	93
6-018-1288	5150481288	29.13	FHP 18-04	Approved	SFN-P	W	CC	6,053	307
6-018-1324	5160481324	4.78	FHP 18-06	Approved	SFN-P	W	CC	857	89
6-018-1337	5160481337	7.69	FHP 18-06	Approved	SFN-P	W	CC	1,444	147
6-018-1339	5150481339	91.24	FHP 18-04	Approved	SFN-P	W	CC	22,376	1,374
6-018-1346	5160481346	12.90	FHP 18-06	Approved	SFN-P	W	CC	2,883	143
6-018-1358	5150481358	14.53	FHP 18-04	Approved	SFN-P	W	CC	3,295	154
6-018-1388	5160481388	30.56	FHP 18-06	Approved	SFN-P	S	CC	6,824	419
6-018-1393	5160481393	10.33	FHP 18-06	Approved	SFN-P	W	CC	2,413	95
6-018-1454	5150481454	75.56	FHP 18-03 - Amendment	Approved	SFN-P	W	CC	19,318	1,398
6-018-1604	5150481604	9.00	FHP 18-05	Approved	SFN-P	S	CC	2,096	87
6-018-1639	5140481639	131.31	FHP 18-07	Approved	SFN-P	W-M	CC	31,940	3,590
6-018-1677	5150481677	37.73	FHP 18-05	Approved	SFN-P	W	CC	9,640	543
6-018-1737	5140481737	41.32	FHP 18-07	Approved	SFN-P	W	CC	9,694	1,519
6-018-1767	5150481767	22.60	FHP 18-05	Approved	SFN-P	W	CC	5,314	216
6-018-1780	5150481780	10.54	FHP 18-05	Approved	SFN-P	W	CC	2,437	99
6-018-1821	5150481821	5.63	FHP 18-06	Approved	SFN-P	W	CC	1,564	96
6-018-2082	5150482082	25.75	FHP 18-05	Approved	SFN-P	S	CC	6,361	374
6-018-3608	5160473608	40.01	FHP 18-02 - Amendment	Approved	SFN-P	M	CC	8,205	573
6-018-3684	5160473684	10.77	FHP 18-02 - Amendment	Approved	SFN-P	S	CC	2,466	126
6-019-0144	5170480144	40.02	FHP 19-05	Approved	SFN-P	W	CC	9,211	389
6-019-0198	5170480198	29.51	FHP 19-05	Approved	SFN-P	W	CC	7,658	623
6-019-0220	5170480220	14.58	FHP 19-05	Approved	SFN-P	W	CC	3,174	664
6-019-0264	5170480264	60.61	FHP 19-05	Approved	SFN-P	W	CC	14,528	793
6-019-0290	5170480290	23.51	FHP 19-05	Approved	SFN-P	W	CC	5,552	335
6-019-0297	5170480297	13.49	FHP 19-05	Approved	SFN-P	W	CC	3,245	177
6-019-0492	5170480492	12.16	FHP_Sun19_2015-03	Submission	SFN-P	S-M	CC	3,399	534
6-019-0603	5160480603	33.91	FHP 19-05	Approved	SFN-P	W	CC	8,112	466
6-019-0999	5170480999	70.31	FHP19-02	Submission	SFN-P	M	CC	14,224	5,313

Block	Opening #	Area (ha)	FHP #	FHP Stage	Tactic	Season	Strategy	Conifer m <sup>3</sup>	Decid m <sup>3</sup>
6-019-1513	5170481513	8.23	FHP_Sun19_2015-03	Submission	SFN-P	M	CC	2,087	230
6-019-1608	5170481608	28.92	FHP_Sun19_2015-03	Submission	SFN-P	M	CC	5,431	2,388
6-019-1645	5170481645	56.98	FHP_Sun19_2015-03	Submission	SFN-P	M	CC	9,652	6,483
6-019-2024	5170482024	15.59	FHP_Sun19_2015-03	Submission	SFN-P	M	CC	3,637	855
6-019-2147	5170482147	26.96	FHP 19-06	Approved	SFN-P	S-W	CC	6,453	351
6-019-2199	5170482199	5.86	FHP 19-06	Approved	SFN-P	W	CC	1,503	158
6-019-2457	5160482457	27.41	FHP 19-04	Approved	SFN-P	W	CC	6,903	461
6-019-2507	5160482507	36.61	FHP 19-04	Approved	SFN-P	W	CC	8,801	460
6-019-2706	5170472706	21.79	FHP 19-05	Approved	SFN-P	S	CC	5,532	405
6-019-2732	5170472732	19.94	FHP 19-05	Approved	SFN-P	S	CC	4,851	287
6-019-2734	5160482734	6.98	FHP 19-04	Approved	NSP	W	CC	1,519	74
6-019-2762	5160482762	7.00	FHP 19-04 - Amendment	Approved	SFN-P	W	CC	1,618	100
6-019-2763	5170472763	20.76	FHP 19-05	Approved	SFN-P	S	CC	4,858	313
6-019-2778	5170472778	9.84	FHP 19-05	Approved	SFN-P	W	CC	1,929	192
6-019-2856	5170482856	4.80	FHP 19-06	Approved	SFN-P	S	CC	1,080	295
6-019-2864	5170472864	43.79	FHP 19-05	Approved	SFN-P	S	CC	11,254	920
6-019-3072	5170483072	9.72	FHP_Sun19_2015-03	Submission	SFN-P	M	CC	1,368	1,756
6-019-3087	5170483087	8.15	FHP_Sun19_2015-03	Submission	SFN-P	M	CC	1,802	437
6-019-3135	5170483135	21.31	FHP_Sun19_2015-03	Submission	SFN-P	M	CC	5,363	748
6-019-3155	5170483155	5.55	FHP_Sun19_2015-03	Submission	SFN-P	W	CC	1,295	278
6-019-3178	5170483178	6.22	FHP_Sun19_2015-03	Submission	SFN-P	M	CC	1,439	54
6-019-3268	5170483268	13.38	FHP_Sun19_2015-03	Submission	SFN-P	M	CC	1,858	2,031
6-019-3316	5170483316	24.38	FHP_Sun19_2015-03	Submission	SFN-P	S	CC	3,785	3,165
6-019-3352	5170483352	7.62	FHP_Sun19_2015-03	Submission	SFN-P	W-M	CC	1,492	580
6-019-3381	5170473381	20.80	FHP 19-05	Approved	SFN-P	W	CC	4,435	207
6-019-3459	5160483459	5.87	FHP 19-04 - Amendment	Approved	SFN-P	S	CC	718	1,071
6-019-3491	5170473491	15.46	FHP 19-05	Approved	SFN-P	W	CC	3,303	189
6-019-3514	5170473514	5.33	FHP 19-05	Approved	SFN-P	W	CC	1,164	56
6-019-3545	5170473545	15.52	FHP 19-05	Approved	SFN-P	W	CC	3,575	142
6-020-1921	5170471921	43.94	FHP 20-04	Approved	SFN-P	S-W	CC	10,702	613
6-020-2054	5170472054	47.96	FHP 20-04	Approved	SFN-P	S-W	CC	12,615	1,062
6-020-2091	5170472091	13.23	FHP 20-04	Approved	SFN-P	S	CC	3,453	283
6-020-2198	5170472122	16.28	FHP 20-01 - Amendment	Approved	SFN-P	W	CC	3,753	164
6-020-2243	5170472243	54.08	FHP 20-01 - Amendment	Approved	SFN-P	W	CC	11,635	662
6-020-3065	5170473065	16.23	FHP 20-04	Approved	SFN-P	W	CC	3,834	311
6-022-0177	5190520177	30.94	FHP 22-02	Approved	SFN-P	W	CC	6,419	1,715
6-022-0261	5190520261	5.06	FHP 22-02	Approved	SFN-P	W	CC	1,272	104
6-022-0647	5180520647	71.66	FHP 22-02	Approved	SFN-P	W	CC	11,174	7,921
6-022-0781	5190520781	10.47	FHP_Sun22_2014-09	Approved	SFN-P	W	CC	1,461	1,595
6-022-0855	5190520855	7.26	FHP_Sun22_2014-09	Approved	SFN-P	W	CC	922	967
6-022-2367	5200522367	13.50	FHP 22-03	Approved	LFN-R	W	CC	2,633	873
6-022-2730	5200522730	19.32	FHP 22-03	Approved	LFN-R	S	CC	2,455	3,384
6-022-2894	5200522894	2.44	FHP 22-03	Approved	SFN-P	S	CC	593	41
6-023-3133	5180523133	56.82	FHP 23-02 - Amendment	Approved	NSP	W	CC	9,679	8,821
6-024-2742	5170522742	11.05	FHP 24-04	Approved	SFN-P	W	CC	2,581	106
6-024-2964	5170522964	2.13	FHP 24-04	Approved	SPP	W	CC	502	41
6-024-2973	5170522973	4.33	FHP 24-04	Approved	SPP	W	CC	602	799
6-024-2976	5170522976	10.25	FHP 24-04	Approved	SFN-P	W	CC	2,354	138
6-024-2994	5170522994	7.32	FHP 24-04	Approved	SFN-P	W	CC	1,697	107
6-024-3569	5170523569	15.29	FHP 24-03 - Amendment	Approved	SPP	W	CC	2,257	1,847
<b>Grand Total</b>	<b>267 Blocks</b>	<b>6,546.38</b>						<b>1,512,454</b>	<b>186,219</b>

## APPENDIX 3: SOFTWOOD AND HARDWOOD VOLUME SUMMARY

(revised 14 April 2015)

Compartment	Summer		Marginal		Winter	
	Conif m <sup>3</sup>	Decid m <sup>3</sup>	Conif m <sup>3</sup>	Decid m <sup>3</sup>	Conif m <sup>3</sup>	Decid m <sup>3</sup>
6-002	26,784	832	44,632	2,368	-	-
6-004	208,154	13,314	2,690	227	-	-
6-005	43,816	2,043	-	-	-	-
6-006	27,792	1,383	-	-	-	-
6-007	10,780	366	-	-	-	-
6-008	1,106	47	-	-	38,189	2,276
6-009	45,271	3,131	9,738	1,254	70,007	7,249
6-010	4,199	235	-	-	2,311	93
6-011	3,314	3,015	-	-	19,865	8,864
6-012	5,769	339	1,448	675	12,188	776
6-013	156,395	26,138	55,822	7,789	71,851	10,889
6-014	1,098	145	-	-	18,719	2,020
6-015	16,109	1,092	-	-	-	-
6-016	3,920	215	-	-	153,410	7,931
6-017	21,974	2,161	4,055	363	3,325	1,287
6-018	17,747	1,006	8,205	573	131,372	10,589
6-019	35,478	6,990	53,313	20,646	89,017	6,344
6-020	3,453	283	23,317	1,675	19,222	1,136
6-022	3,048	3,425	-	-	23,882	13,174
6-023	-	-	-	-	9,679	8,821
6-024	-	-	-	-	9,994	3,038
<b>Total</b>	<b>636,205</b>	<b>66,159</b>	<b>203,220</b>	<b>35,570</b>	<b>673,029</b>	<b>84,489</b>



## APPENDIX 4: CONTINGENCY WOOD REPORT





# Annual Operating Plan Contingency Report

For the period from 5/1/2015 to 4/30/2016

## Sundance

Sundance 13      Last FHP # : FHP 13-07

<u>Block</u>	<u>Opening #</u>	<u>Blk Area</u> <u>(ha)</u>	<u>FHP #</u>	<u>FHP Stage</u>	<u>Tactic</u>	<u>Season</u>	<u>Strategy</u>	<u>Volume (m3)</u>	
								<u>Con</u>	<u>Dec</u>
<b>Summer</b>									
6-013-3141	5140453141	11.11	FHP 13-02 - Amendment 2011-06	Approved	SFN-P	S	CC	2,724	461
Sundance 13	1	Blocks	11.11					2,724	461

## APPENDIX 5: AOP ROAD SCHEDULE/AOP CROSSING SCHEDULE

## 2015 AOP Road Schedule - FMA9700032

For the period from 5/1/2015 to 4/30/2016

revised 17 April 2015

Working Circle	Compartment	Road Name	Class	Harvest	Haul	Construct	Maintain	Reclaim
Sundance	04	6-04-508	5	Yes	Yes	Yes	Yes	Yes
Sundance	04	6-04-509	5	Yes	Yes	Yes	Yes	Yes
Sundance	04	6-04-510	5	Yes	Yes	Yes	Yes	Yes
Sundance	04	6-04-511	5	Yes	Yes	Yes	Yes	Yes
Sundance	04	6-04-512	5	Yes	Yes	Yes	Yes	Yes
Sundance	04	6-04-513	5	Yes	Yes	Yes	Yes	Yes
Sundance	04	6-04-514	5	Yes	Yes	Yes	Yes	Yes
Sundance	04	6-04-515	5	Yes	Yes	Yes	Yes	Yes
Sundance	04	6-04-516	5	Yes	Yes	Yes	Yes	Yes
Sundance	04	6-04-517	5	Yes	Yes	Yes	Yes	Yes
Sundance	04	Old Oilfield Road #1	5	Yes	Yes	Yes	Yes	Yes
Sundance	06	6-06-501	5	Yes	Yes	Yes	Yes	Yes
Sundance	08	6-08-501	5	Yes	Yes	Yes	Yes	Yes
Sundance	08	6-08-502	5	Yes	Yes	Yes	Yes	Yes
Sundance	08	6-08-503	5	Yes	Yes	Yes	Yes	Yes
Sundance	08	6-08-504	5	Yes	Yes	Yes	Yes	Yes
Sundance	08	6-08-505	5	Yes	Yes	Yes	Yes	Yes
Sundance	08	6-08-506	5	Yes	Yes	Yes	Yes	Yes
Sundance	08	6-08-507	5	Yes	Yes	Yes	Yes	Yes
Sundance	09	6-09-501	5	Yes	Yes	Yes	Yes	Yes
Sundance	09	6-09-502	5	Yes	Yes	Yes	Yes	Yes
Sundance	09	6-009-0652A	6	Yes	Yes	Yes	Yes	Yes
Sundance	09	6-009-0663A	6	Yes	Yes	Yes	Yes	Yes
Sundance	09	6-009-2615A	6	Yes	Yes	Yes	Yes	Yes
Sundance	09	6-009-2615B	6	Yes	Yes	Yes	Yes	Yes
Sundance	09	6-009-2783A	6	Yes	Yes	Yes	Yes	Yes
Sundance	09	6-009-3453A	6	Yes	Yes	Yes	Yes	Yes
Sundance	09	6-009-3453B	6	Yes	Yes	Yes	Yes	Yes
Sundance	12	6-12-504	5	Yes	Yes	Yes	Yes	Yes
Sundance	12	6-12-505	5	Yes	Yes	Yes	Yes	Yes
Sundance	13	6-13-502	5	Yes	Yes	Yes	Yes	Yes
Sundance	13	6-13-503	5	Yes	Yes	Yes	Yes	Yes
Sundance	13	6-13-504	5	Yes	Yes	Yes	Yes	Yes
Sundance	13	6-13-505	5	Yes	Yes	Yes	Yes	Yes
Sundance	13	6-13-506	5	Yes	Yes	Yes	Yes	Yes
Sundance	13	6-13-507	5	Yes	Yes	Yes	Yes	Yes
Sundance	13	6-13-508	5	Yes	Yes	Yes	Yes	Yes
Sundance	13	6-13-510	5	Yes	Yes	Yes	Yes	Yes
Sundance	13	6-13-512	5	Yes	Yes	Yes	Yes	Yes
Sundance	13	6-13-513	5	Yes	Yes	Yes	Yes	Yes
Sundance	13	6-13-514	5	Yes	Yes	Yes	Yes	Yes
Sundance	13	6-13-515	5	Yes	Yes	Yes	Yes	Yes
Sundance	13	6-13-516	5	Yes	Yes	Yes	Yes	Yes
Sundance	13	6-13-517	5	Yes	Yes	Yes	Yes	Yes
Sundance	13	6-13-518	5	Yes	Yes	Yes	Yes	Yes
Sundance	13	6-13-520	5	Yes	Yes	Yes	Yes	Yes
Sundance	13	6-13-521	5	Yes	Yes	Yes	Yes	Yes

## 2015 AOP Road Schedule - FMA9700032

For the period from 5/1/2015 to 4/30/2016

Working Circle	Compartment	Road Name	Class	Harvest	Haul	Construct	Maintain	Reclaim
Sundance	13	6-13-522	5	Yes	Yes	Yes	Yes	Yes
Sundance	13	6-13-523	5	Yes	Yes	Yes	Yes	Yes
Sundance	13	6-013-0191A	6	Yes	Yes	Yes	Yes	Yes
Sundance	13	6-013-2643A	6	Yes	Yes	Yes	Yes	Yes
Sundance	13	6-013-3437A	6	Yes	Yes	Yes	Yes	Yes
Sundance	14	6-14-501	5	Yes	Yes	Yes	Yes	Yes
Sundance	14	6-14-502	5	Yes	Yes	Yes	Yes	Yes
Sundance	14	6-14-504	5	Yes	Yes	Yes	Yes	Yes
Sundance	14	6-14-505	5	Yes	Yes	Yes	Yes	Yes
Sundance	15	6-015-1336A	6	Yes	Yes	Yes	Yes	Yes
Sundance	15	6-015-1499A	6	Yes	Yes	Yes	Yes	Yes
Sundance	15	6-015-1499B	6	Yes	Yes	Yes	Yes	Yes
Sundance	16	6-16-504	5	Yes	Yes	Yes	Yes	Yes
Sundance	16	6-16-505	5	Yes	Yes	Yes	Yes	Yes
Sundance	16	6-16-506	5	Yes	Yes	Yes	Yes	Yes
Sundance	16	6-16-507	5	Yes	Yes	Yes	Yes	Yes
Sundance	16	6-16-508	5	Yes	Yes	Yes	Yes	Yes
Sundance	16	6-16-509	5	Yes	Yes	Yes	Yes	Yes
Sundance	16	6-16-510	5	Yes	Yes	Yes	Yes	Yes
Sundance	16	6-16-511	5	Yes	Yes	Yes	Yes	Yes
Sundance	16	6-16-512	5	Yes	Yes	Yes	Yes	Yes
Sundance	16	6-16-513	5	Yes	Yes	Yes	Yes	Yes
Sundance	16	6-16-515	5	Yes	Yes	Yes	Yes	Yes
Sundance	16	6-16-516	5	Yes	Yes	Yes	Yes	Yes
Sundance	16	6-16-517	5	Yes	Yes	Yes	Yes	Yes
Sundance	16	6-16-518	5	Yes	Yes	Yes	Yes	Yes
Sundance	16	6-016-1870F	6	Yes	Yes	Yes	Yes	Yes
Sundance	17	6-17-505	5	Yes	Yes	Yes	Yes	Yes
Sundance	17	6-017-0119A	6	Yes	Yes	Yes	Yes	Yes
Sundance	17	6-017-0119B	6	Yes	Yes	Yes	Yes	Yes
Sundance	17	6-017-0149A	6	Yes	Yes	Yes	Yes	Yes
Sundance	17	6-017-0149B	6	Yes	Yes	Yes	Yes	Yes
Sundance	18	6-18-501	5	Yes	Yes	Yes	Yes	Yes
Sundance	18	6-18-503	5	Yes	Yes	Yes	Yes	Yes
Sundance	18	6-18-504	5	Yes	Yes	Yes	Yes	Yes
Sundance	18	6-18-505	5	Yes	Yes	Yes	Yes	Yes
Sundance	18	6-18-506	5	Yes	Yes	Yes	Yes	Yes
Sundance	18	6-18-507	5	Yes	Yes	Yes	Yes	Yes
Sundance	18	6-18-508	5	Yes	Yes	Yes	Yes	Yes
Sundance	18	6-18-509	5	Yes	Yes	Yes	Yes	Yes
Sundance	18	6-018-1324A	6	Yes	Yes	Yes	Yes	Yes
Sundance	18	6-018-1821A	6	Yes	Yes	Yes	Yes	Yes

## 2015 AOP Road Schedule - FMA9700032

For the period from 5/1/2015 to 4/30/2016

Working Circle	Compartment	Road Name	Class	Harvest	Haul	Construct	Maintain	Reclaim
Sundance	19	6-19-501	5	Yes	Yes	Yes	Yes	Yes
Sundance	19	6-19-502	5	Yes	Yes	Yes	Yes	Yes
Sundance	19	6-19-503	5	Yes	Yes	Yes	Yes	Yes
Sundance	19	6-19-504	5	Yes	Yes	Yes	Yes	Yes
Sundance	19	6-19-505	5	Yes	Yes	Yes	Yes	Yes
Sundance	19	6-19-506	5	Yes	Yes	Yes	Yes	Yes
Sundance	19	6-19-507	5	Yes	Yes	Yes	Yes	Yes
Sundance	19	6-19-508	5	Yes	Yes	Yes	Yes	Yes
Sundance	19	6-19-509	5	Yes	Yes	Yes	Yes	Yes
Sundance	20	6-20-502	5	Yes	Yes	Yes	Yes	Yes
Sundance	20	6-20-504	5	Yes	Yes	Yes	Yes	Yes
Sundance	22	6-22-502	5	Yes	Yes	Yes	Yes	Yes
Sundance	22	6-22-503	5	Yes	Yes	Yes	Yes	Yes
Sundance	23	6-23-501	5	Yes	Yes	Yes	Yes	Yes
Sundance	24	6-24-500	5	Yes	Yes	Yes	Yes	Yes

## 2015 AOP Crossing Schedule - FMA9700032

For the period from 5/1/2015 to 4/30/2016 revised 17 April 2015

Working Circle	Compartment	Road Name	Class	Crossing ID	Crossing Type	Crossing Status	Stream Class	Harvest	Haul	Construct	Maintain	Reclaim
Sundance	04	6-04-509	5	6-04-509-1	CULV-C1P	Planned	Unknown	Yes	Yes	Yes	Yes	Yes
Sundance	04	6-04-512	5	6-04-512-6	BR-TIMBER	Planned	Unknown	Yes	Yes	Yes	Yes	Yes
Sundance	04	6-04-512	5	6-04-512-5	BR-TIMBER	Planned	Unknown	Yes	Yes	Yes	Yes	Yes
Sundance	04	6-04-512	5	6-04-512-1	BR-TIMBER	Planned	Unknown	Yes	Yes	Yes	Yes	Yes
Sundance	04	6-04-512	5	6-04-512-2	CULV-UNKN	Planned	Unknown	Yes	Yes	Yes	Yes	Yes
Sundance	04	6-04-512	5	6-04-512-3	CULV-UNKN	Planned	Unknown	Yes	Yes	Yes	Yes	Yes
Sundance	04	6-04-512	5	6-04-512-4	TEMP-LOGB	Planned	Unknown	Yes	Yes	Yes	Yes	Yes
Sundance	04	6-04-513	5	6-04-513-2	BR-TIMBER	Planned	Unknown	Yes	Yes	Yes	Yes	Yes
Sundance	04	6-04-513	5	6-04-513-1	CULV-UNKN	Planned	Unknown	Yes	Yes	Yes	Yes	Yes
Sundance	04	6-04-514	5	6-04-514-1	BR-TIMBER	Planned	Unknown	Yes	Yes	Yes	Yes	Yes
Sundance	04	6-04-516	5	6-04-516-1	BR-TIMBER	Planned	Unknown	Yes	Yes	Yes	Yes	Yes
Sundance	04	6-04-516	5	6-04-516-2	TEMP-LOGB	Planned	Unknown	Yes	Yes	Yes	Yes	Yes
Sundance	04	6-04-517	5	6-04-517-4	CULV-UNKN	Planned	Unknown	Yes	Yes	Yes	Yes	Yes
Sundance	04	6-04-517	5	6-04-517-3	CULV-UNKN	Planned	Unknown	Yes	Yes	Yes	Yes	Yes
Sundance	04	6-04-517	5	6-04-517-2	CULV-UNKN	Planned	Unknown	Yes	Yes	Yes	Yes	Yes
Sundance	04	6-04-517	5	6-04-517-1	CULV-UNKN	Planned	Unknown	Yes	Yes	Yes	Yes	Yes
Sundance	04	6-04-517	5	6-04-517-5	CULV-UNKN	Planned	Unknown	Yes	Yes	Yes	Yes	Yes
Sundance	08	6-08-501	5	6-08-501-1	BR-STEEL-S	Planned	Small Permanent	Yes	Yes	Yes	Yes	Yes
Sundance	08	6-08-502	5	6-08-502-3	BR-STEEL-S	Planned	Small Permanent	Yes	Yes	Yes	Yes	Yes
Sundance	08	6-08-502	5	6-08-502-2	BR-STEEL-S	Planned	Transitional	Yes	Yes	Yes	Yes	Yes
Sundance	08	6-08-503	5	6-08-503-2	BR-TIMBER	Planned	Intermittent	Yes	Yes	Yes	Yes	Yes
Sundance	09	6-09-502	5	6-09-502-1	TEMP-LOGB	Planned	Intermittent	Yes	Yes	Yes	Yes	Yes
Sundance	09	6-009-0663A	6	6-009-0663A-1	TEMP-SNOW	Planned	Small Permanent	Yes	Yes	Yes	Yes	Yes
Sundance	13	6-13-502	5	6-13-502-1	BR-TIMBER	Planned	Small Permanent	Yes	Yes	Yes	Yes	Yes
Sundance	13	6-13-504	5	6-13-504-1	BR-TIMBER	Planned	Small Permanent	Yes	Yes	Yes	Yes	Yes
Sundance	13	6-13-504	5	6-13-504-2	TEMP-SNOW	Planned	Intermittent	Yes	Yes	Yes	Yes	Yes
Sundance	13	6-13-505	5	6-13-505-1	BR-TIMBER	Planned	Intermittent	Yes	Yes	Yes	Yes	Yes
Sundance	13	6-13-510	5	6-13-510-2	BR-TIMBER	Planned	Transitional	Yes	Yes	Yes	Yes	Yes
Sundance	13	6-13-515	5	6-13-515-1	BR-TIMBER	Planned	Transitional	Yes	Yes	Yes	Yes	Yes
Sundance	13	6-13-517	5	6-13-517-1	BR-TIMBER	Planned	Transitional	Yes	Yes	Yes	Yes	Yes
Sundance	14	6-14-501	5	6-14-501-2	BR-TIMBER	Planned	Transitional	Yes	Yes	Yes	Yes	Yes
Sundance	14	6-14-501	5	6-14-501-1	BR-STEEL-S	Planned	Small Permanent	Yes	Yes	Yes	Yes	Yes
Sundance	14	6-14-502	5	6-14-502-2	BR-STEEL-S	Planned	Small Permanent	Yes	Yes	Yes	Yes	Yes
Sundance	14	6-14-502	5	6-14-502-1	BR-TIMBER	Planned	Small Permanent	Yes	Yes	Yes	Yes	Yes
Sundance	14	6-14-504	5	6-14-504-1	BR-STEEL-S	Planned	Transitional	Yes	Yes	Yes	Yes	Yes

## 2015 AOP Crossing Schedule - FMA9700032

For the period from 5/1/2015 to 4/30/2016

Working Circle	Compartment	Road Name	Class	Crossing ID	Crossing Type	Crossing Status	Stream Class	Harvest	Haul	Construct	Maintain	Reclaim
Sundance	14	6-14-505	5	6-14-505-1	BR-TIMBER	Planned	Small Permanent	Yes	Yes	Yes	Yes	Yes
Sundance	16	6-16-505	5	6-16-505-1	BR-TIMBER	Planned	Intermittent	Yes	Yes	Yes	Yes	Yes
Sundance	16	6-16-507	5	6-16-507-2	BR-TIMBER	Planned	Small Permanent	Yes	Yes	Yes	Yes	Yes
Sundance	16	6-16-509	5	6-16-509-4	BR-TIMBER	Existing	Small Permanent	Yes	Yes	Yes	Yes	Yes
Sundance	16	6-16-509	5	6-16-509-3	TEMP-LOGB	Existing	Unknown	Yes	Yes	Yes	Yes	Yes
Sundance	16	6-16-509	5	6-16-509-2	TEMP-LOGB	Existing	Unknown	Yes	Yes	Yes	Yes	Yes
Sundance	16	6-16-509	5	6-16-509-1	TEMP-LOGB	Existing	Unknown	Yes	Yes	Yes	Yes	Yes
Sundance	16	6-16-510	5	6-16-510-1	BR-TIMBER	Planned	Transitional	Yes	Yes	Yes	Yes	Yes
Sundance	16	6-16-511	5	6-16-511-1	BR-TIMBER	Planned	Small Permanent	Yes	Yes	Yes	Yes	Yes
Sundance	16	6-16-515	5	6-16-515-2	BR-TIMBER	Planned	Transitional	Yes	Yes	Yes	Yes	Yes
Sundance	18	6-18-501	5	6-18-501-1	TEMP-SNOW	Planned	Unknown	Yes	Yes	Yes	Yes	Yes
Sundance	19	6-19-509	5	6-19-509-3	TEMP-LOGB	Planned	Intermittent	Yes	Yes	Yes	Yes	Yes
Sundance	22	6-22-502	5	6-22-502-1	TEMP-LOGB	Planned	Unknown	Yes	Yes	Yes	Yes	Yes
Sundance	23	6-23-501	5	6-23-501-1	TEMP-SNOW	Planned	Unknown	Yes	Yes	Yes	Yes	Yes