

SPRUCE MANAGEMENT TRAILS **CAMP 29**

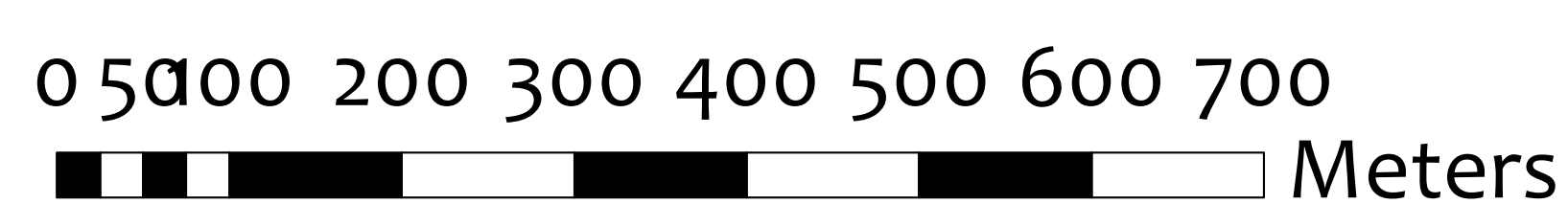
SPRUCE MANAGEMENT (CAMP 29) SKI TRAILS

- Parking
- Kiosk
- Fire Pit (Main Parking Area)
- Fire Pit (Chaos Corner)
- Fire Pit (Bus Stop)
- Steep Hill
- Roads
- Hydrology
- Lakes
- XC SKI TRAILS**
- Beginner's Loop - 2.5 km
- Meadow Trail - 0.8 km
- Dad's Trail - 0.9 km
- Main Line - 1.6 km
- Valley Trail - 4.6 km
- Nice 'n Easy - 2.0 km
- Cut Across - 0.6 km
- Crooked Tree Trail - 1.3 km
- Bus Stop Loop - 2.1 km
- Hill Bypass - 0.4 km
- Jack Wright Way - 0.9 km
- Future Development Opportunity

YOU ARE HERE

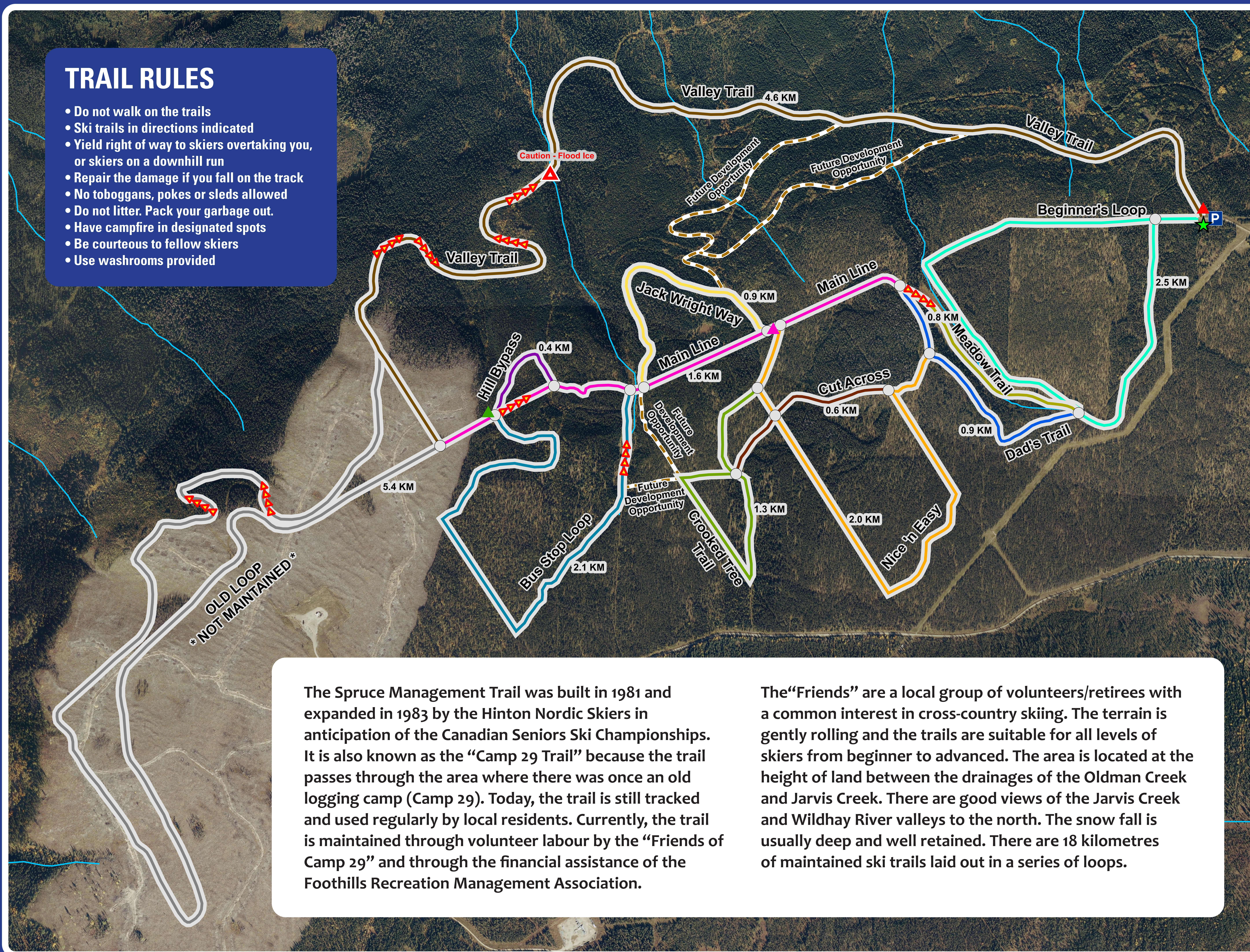
Recommended direction of travel is in a clockwise direction from the parking area when ending on Valley Trail.

Trail distances are shown for reference purposes.



TRAIL RULES

- Do not walk on the trails
- Ski trails in directions indicated
- Yield right of way to skiers overtaking you, or skiers on a downhill run
- Repair the damage if you fall on the track
- No toboggans, pokes or sleds allowed
- Do not litter. Pack your garbage out.
- Have campfire in designated spots
- Be courteous to fellow skiers
- Use washrooms provided



The Spruce Management Trail was built in 1981 and expanded in 1983 by the Hinton Nordic Skiers in anticipation of the Canadian Seniors Ski Championships. It is also known as the "Camp 29 Trail" because the trail passes through the area where there was once an old logging camp (Camp 29). Today, the trail is still tracked and used regularly by local residents. Currently, the trail is maintained through volunteer labour by the "Friends of Camp 29" and through the financial assistance of the Foothills Recreation Management Association.

The "Friends" are a local group of volunteers/retirees with a common interest in cross-country skiing. The terrain is gently rolling and the trails are suitable for all levels of skiers from beginner to advanced. The area is located at the height of land between the drainages of the Oldman Creek and Jarvis Creek. There are good views of the Jarvis Creek and Wildhay River valleys to the north. The snow fall is usually deep and well retained. There are 18 kilometres of maintained ski trails laid out in a series of loops.



The Foothills Recreation Management Association is a group of companies, municipalities and organizations operating in the Foothills of Alberta with a belief that providing safe, affordable and enjoyable recreation opportunities for the public is part of our mandate.



FRIAA's mandate is to enhance Alberta's forest resource, for the benefit of Albertans. More specifically, FRIAA's purpose and objectives are to establish programs and initiatives to enhance the forest resources of Alberta, to promote the enhanced management of the forest resources of Alberta, to improve the sustained yield of the forest resources of Alberta, to promote integrated resource management, and to reforest public land using reforestation levies. West Fraser is a member of FRIAA.

