

Spot the Hazards

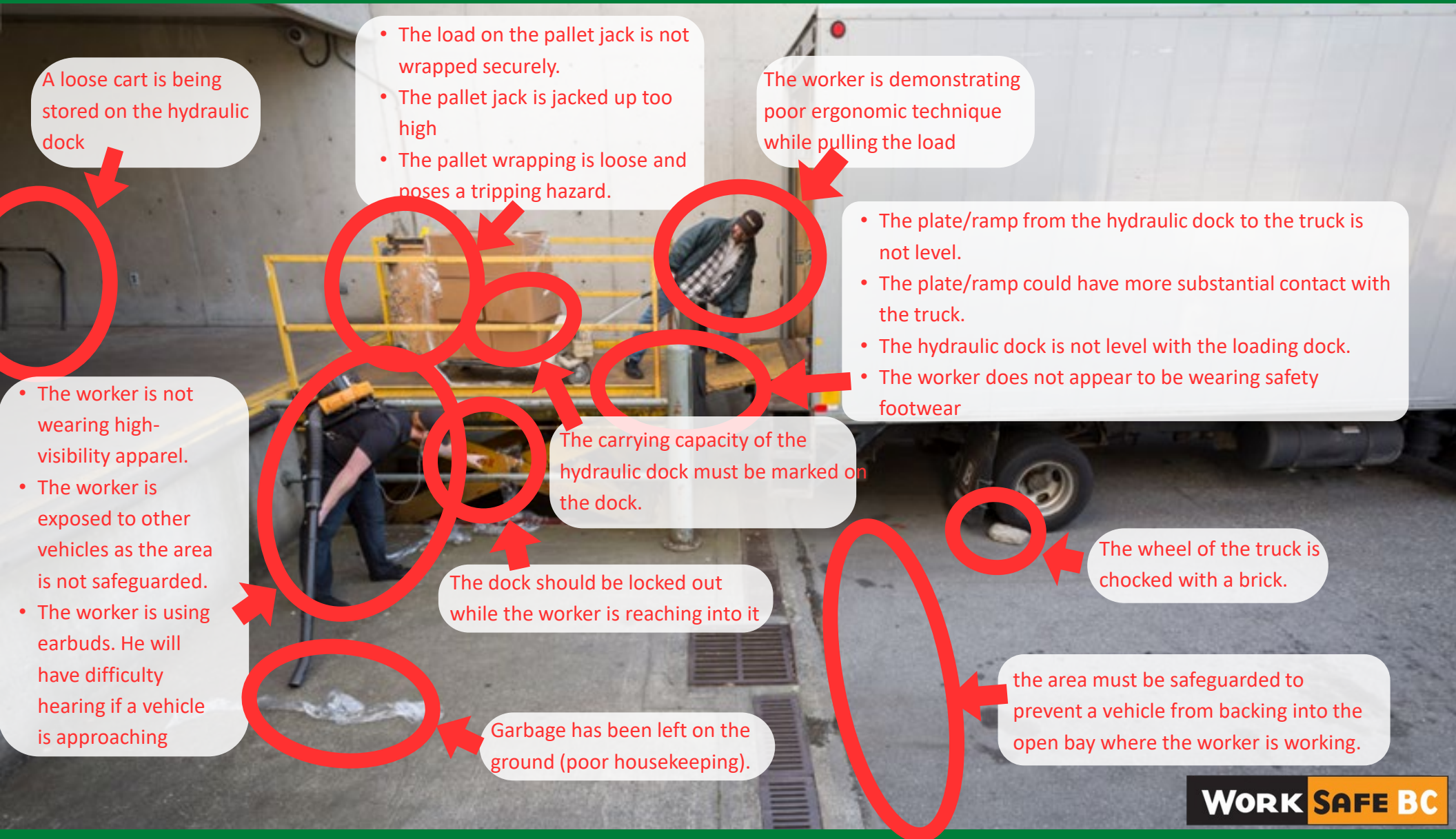


WORK SAFE BC

"Safety is a core value and business priority"



Spot the Hazards



A loose cart is being stored on the hydraulic dock

- The load on the pallet jack is not wrapped securely.
- The pallet jack is jacked up too high
- The pallet wrapping is loose and poses a tripping hazard.

The worker is demonstrating poor ergonomic technique while pulling the load

- The plate/ramp from the hydraulic dock to the truck is not level.
- The plate/ramp could have more substantial contact with the truck.
- The hydraulic dock is not level with the loading dock.
- The worker does not appear to be wearing safety footwear

- The worker is not wearing high-visibility apparel.
- The worker is exposed to other vehicles as the area is not safeguarded.
- The worker is using earbuds. He will have difficulty hearing if a vehicle is approaching

The carrying capacity of the hydraulic dock must be marked on the dock.

The dock should be locked out while the worker is reaching into it

The wheel of the truck is chocked with a brick.

Garbage has been left on the ground (poor housekeeping).

the area must be safeguarded to prevent a vehicle from backing into the open bay where the worker is working.

WORK SAFE BC

"Safety is a core value and business priority"

