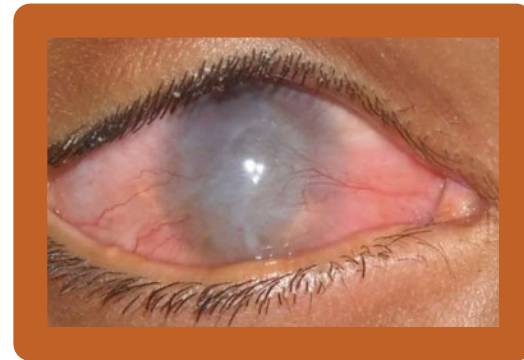


# Eyewash Safety



*If you come across an eyewash station that is unusable, take the time to clean it out and make sure it can easily be accessed and used!*

If you splash a chemical in your eyes, making it impossible to see, could you find the nearest eyewash station, and is it ready to use?



If you get a chemical in your eye, immediately go to the nearest eyewash stations and start flushing with water. Use your thumbs and index fingers to hold your eyes as open as possible, and roll your eyes in all directions.



*Stay there for a minimum of thirty minutes, and have someone else contact first aid!*

*Always know where the nearest eyewash stations are, and ensure that they're clean and free from obstructions.*

- Emergency eyewash facilities must be maintained in a clean and serviceable manner at all times.
- They are to be inspected and documented at appropriate intervals to ensure the unit is in an operationally ready condition.



*"Safety is a core value and business priority"*