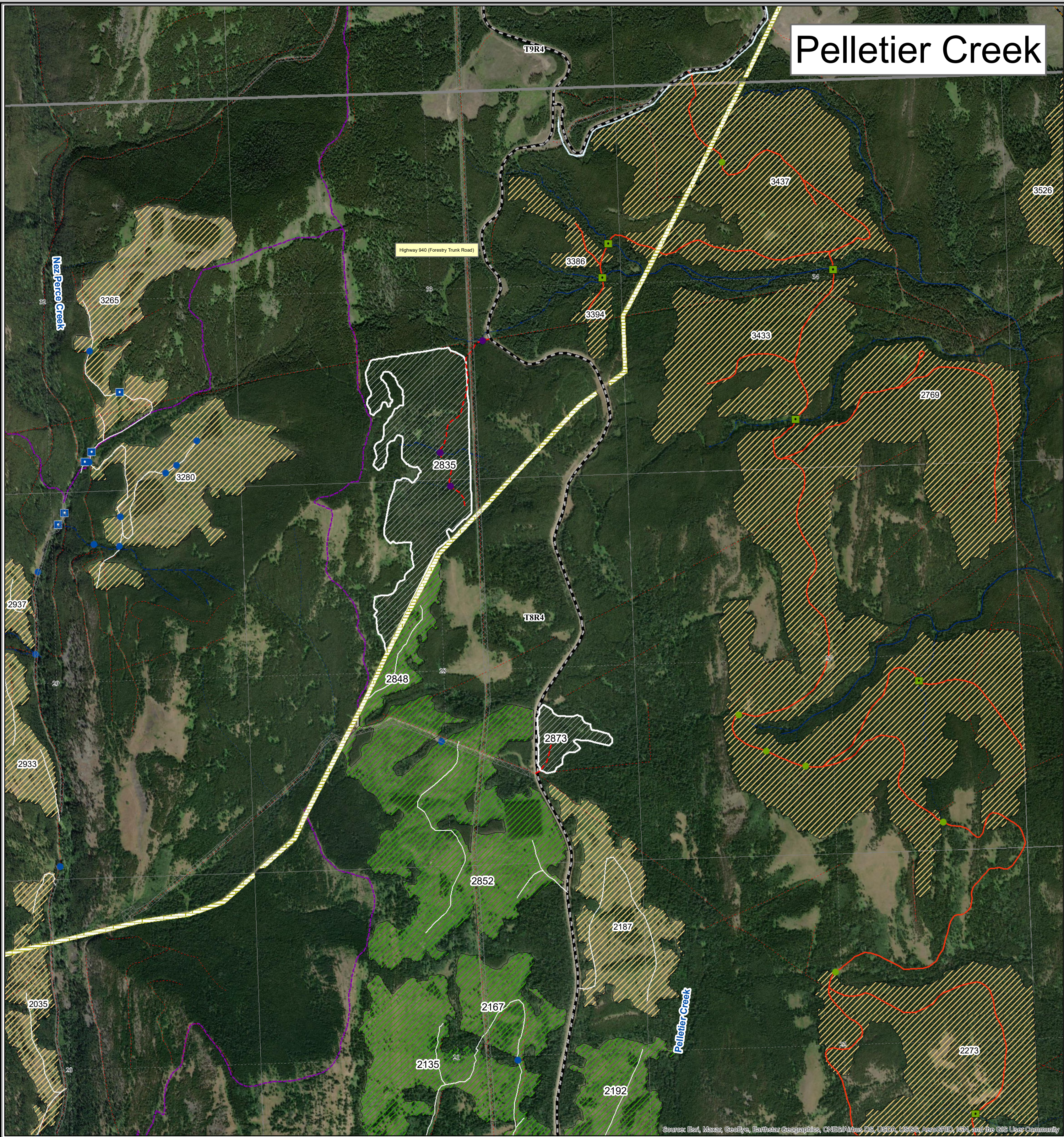
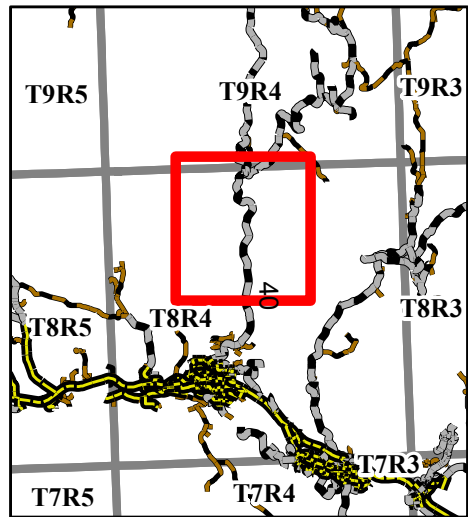


Pelletier Creek



Sources: Esri, Maxar, GeoEye, Earthstar Geographics, CNES/Airbus DS, USDA, USGS, AeroGRID, IGN, and the GIS User Community



- Transportation**
- Road - Gravel
 - Truck Trail
 - Planned
 - Reclaimed
 - Constructed
 - Cutline/Trail
 - Designated Trails

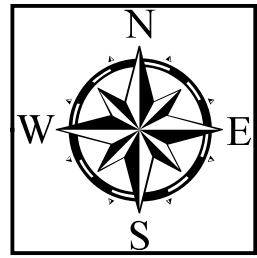
- Hydrography**
- Hydrography
 - Ephemeral
 - Intermittent
 - Transitional
 - Small Permanent
 - Large Permanent

- Surface Dispositions**
- License of Occupation
 - Mineral Surface Lease
 - Pipeline Agreement
 - Easement
 - Forestry Road
 - Misc. Permit
 - Right-of-Entry Agreement

- Parks/Protected Areas**
- Ecological Reserve
 - Heritage Rangeland
 - Natural Area
 - Provincial Park
 - Provincial Recreation Area
 - Wilderness Area
 - Wilderness Park
 - Wildland Provincial Park

- Installations**
- Planned Bridge
 - Active Bridge
 - Reclaimed Bridge
 - Planned Culvert
 - Active Culvert
 - Reclaimed Culvert
 - Gate

- Cutblocks**
- Harvested
 - In Progress
 - Planned
 - Reforested



1:10,000

0 0.1 0.2 0.4 0.6 0.8
Kilometers

Map Title: Pelletier Creek
Created By: Crowsnest Forest Products
Date Created: April 15, 2025
Author: Cade Nixdorf, RPFT

Any duplication or distribution without permission is prohibited.
This map was created using available information and Spray Lake
Sawmills (1980) Ltd makes no warranty for the accuracy or
completeness of this map.