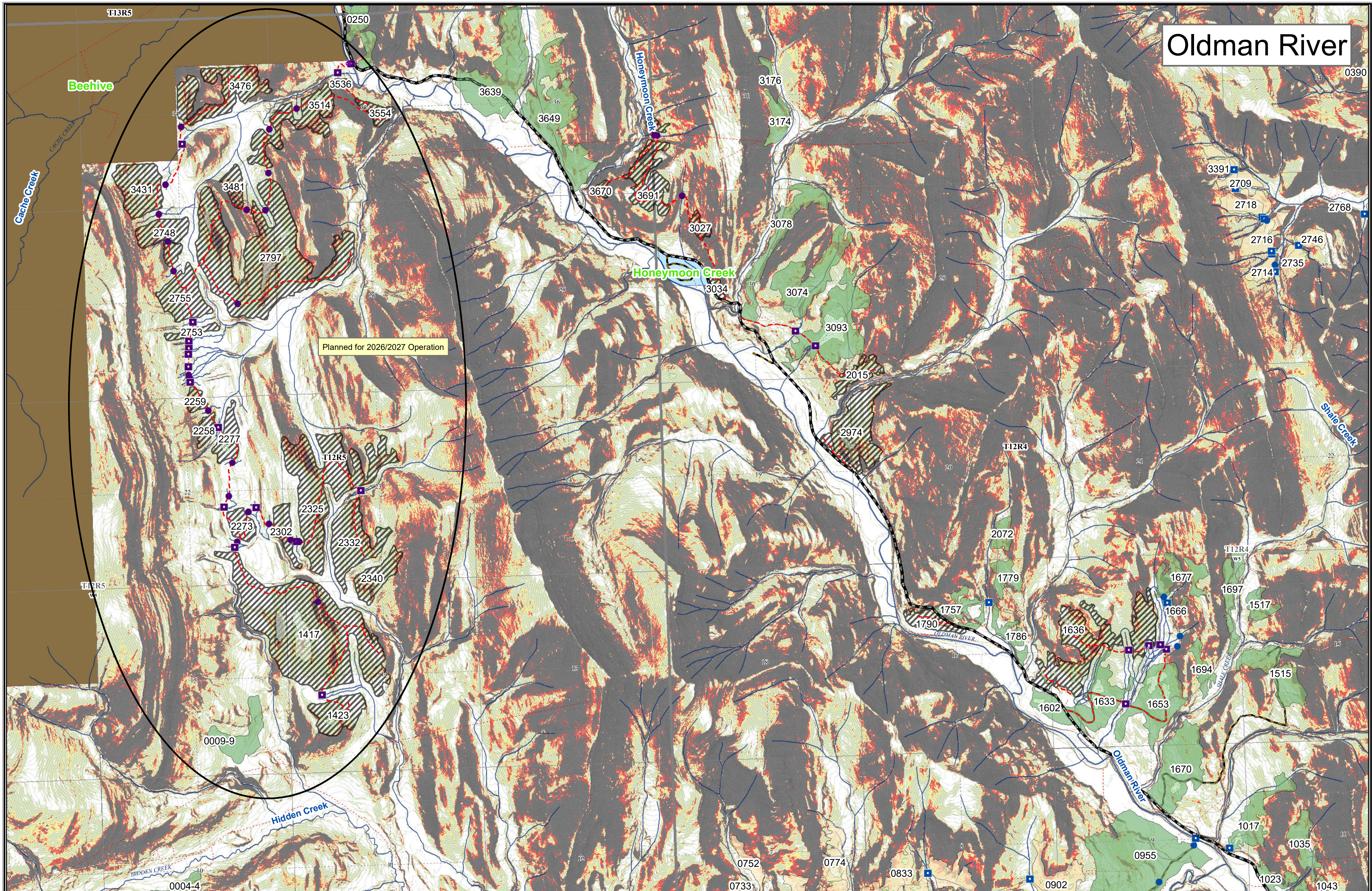
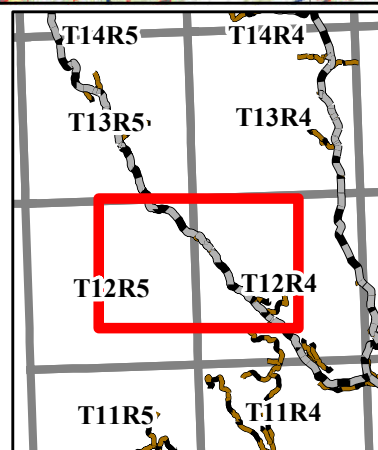


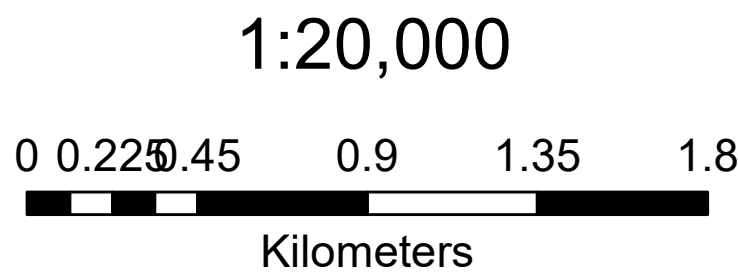
# Oldman River



Planned for 2026/2027 Operation



Transportation	Hydrography	Surface Dispositions	Parks/Protected Areas	Installations	Cutblocks
— Road - Gravel	— Hydrography	— License of Occupation	— Ecological Reserve	— Planned Bridge	— Harvested
— Truck Trail	— Ephemeral	— Mineral Surface Lease	— Heritage Rangeland	— Active Bridge	— In Progress
— Planned	— Intermittent	— Pipeline Agreement	— Natural Area	— Reclaimed Bridge	— Planned
— Reclaimed	— Transitional	— Easement	— Provincial Park	— Planned Culvert	— Reforested
— Constructed	— Small Permanent	— Forestry Road	— Provincial Recreation Area	— Active Culvert	— Retention
— Outline/Trail	— Large Permanent	— Misc. Permit	— Wilderness Area	— Reclaimed Culvert	
— Designated Trails		— Right-of-Entry Agreement	— Wilderness Park	— Gate	
			— Wildland Provincial Park		



Map Title: Oldman River  
Created By: Crownwest Forest Products  
Date Created: April 15, 2025  
Author: Cade Nixdorf, RPET

Any duplication or distribution without permission is prohibited.  
This map was created using available information and Spray Lake  
Sawmills (1980) Ltd makes no warranty for the accuracy or  
completeness of this map.

