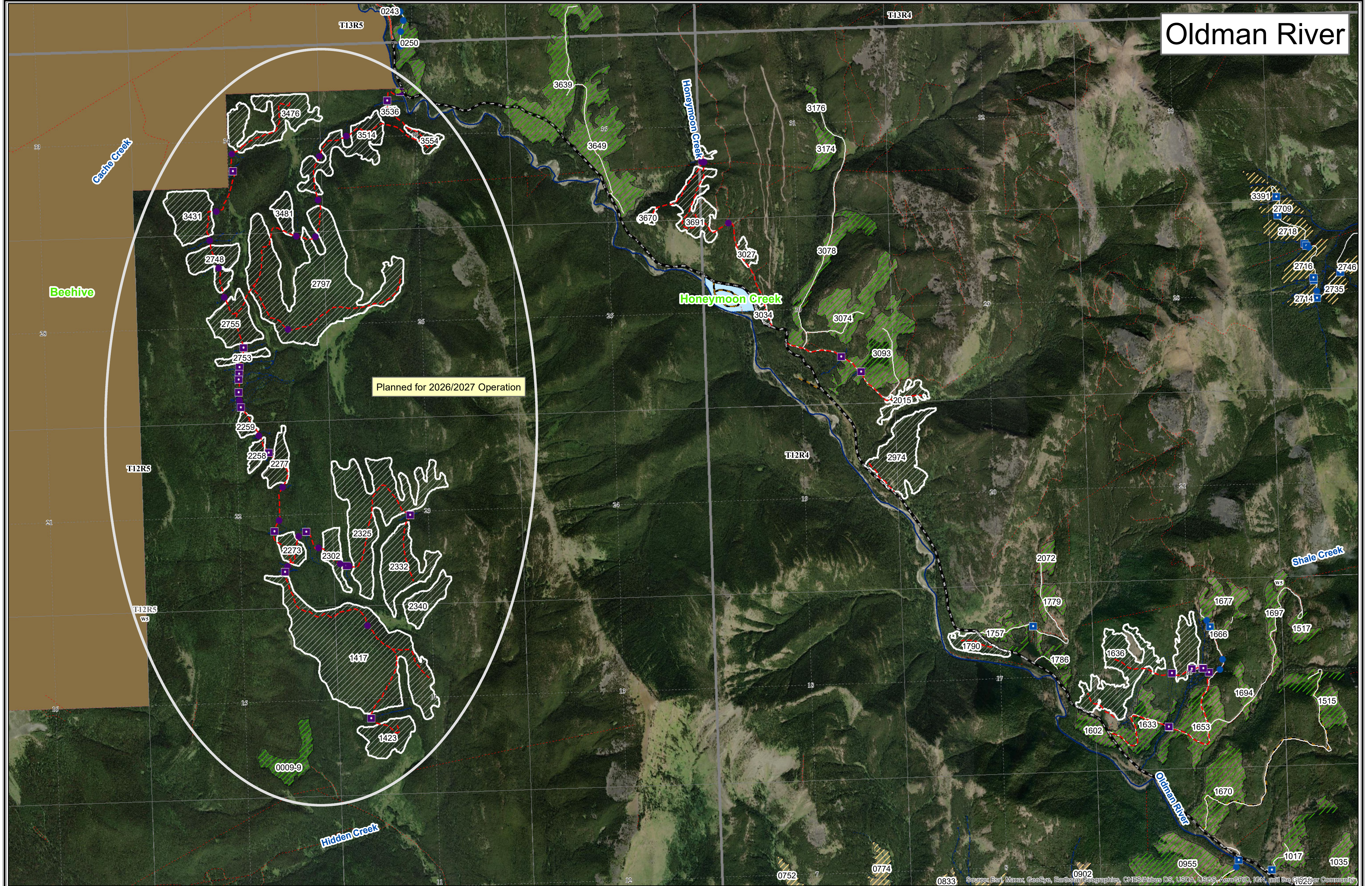
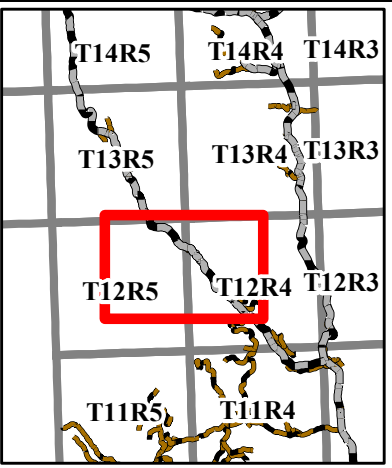


Oldman River

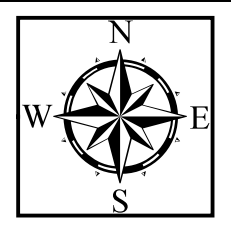
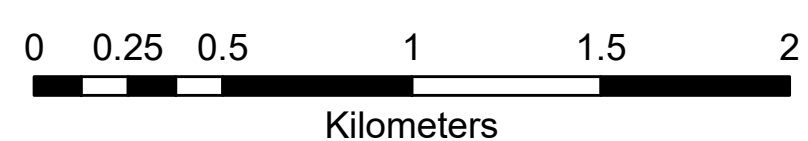


Planned for 2026/2027 Operation



Transportation	Hydrography	Surface Dispositions	Parks/Protected Areas	Installations	Cutblocks
Road - Gravel	Hydrography	License of Occupation	Ecological Reserve	Planned Bridge	Harvested
Truck Trail	Ephemeral	Mineral Surface Lease	Heritage Rangeland	Active Bridge	In Progress
Planned	Intermittent	Pipeline Agreement	Natural Area	Reclaimed Bridge	Planned
Reclaimed	Transitional	Easement	Provincial Park	Planned Culvert	Reforested
Constructed	Small Permanent	Forestry Road	Provincial Recreation Area	Active Culvert	
Cutline/Trail	Large Permanent	Misc. Permit	Wilderness Area	Reclaimed Culvert	
Designated Trails		Right-of-Entry Agreement	Wilderness Park	Gate	
			Wildland Provincial Park		

1:20,000



Map Title: Oldman River
 Created By: Crown Forest Products
 Date Created: April 15, 2025
 Author: Wade Nixdorf, RPF
 Any duplication or distribution without permission is prohibited.
 This map was created using available information and Spray Lake
 Sawmills (1980) Ltd makes no warranty for the accuracy or
 completeness of this map.