

West Fraser Safety Policies

#23

DID YOU KNOW

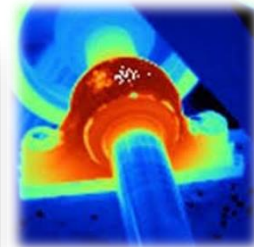
#23

**West Fraser Safety Policy #23
(Wood Dust Mitigation & Control) States:**

2) Identification of Ignition Sources

Based on the locations and areas identified in the Wood Dust Identification assessment or evaluation, Divisions' must determine the possible ignition sources in or in proximity to the areas. The following is a list of possible ignition sources that may exist:

- **Hot Work including cutting, welding, burning, brazing, and use of open flame heat.**
- **Friction forces on equipment including metal on metal, wood debris, and misaligned belts.**
- **Heating appliances including torches, open flame heaters (Salamanders), electrical space heaters, and furnaces.**
- **Human activities such as smoking.**
- **Electrical Sources including MCCs, PDCs, VFDs, etc.**
- **Static Electricity.**
- **Hydraulics.**
- **Lighting.**
- **Compressors.**
- **Tramp Metal**



For More Information

CHECK OUT POLICY #23 ON TREELINE



West Fraser Mills Ltd.

Supervisor
Crew
Talk