

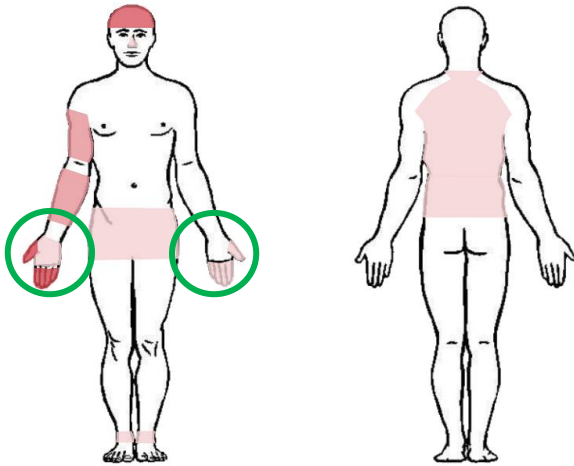
# HAND SAFETY

***This Supervisor Crew Talk focuses on two of the tools we use every day but cannot purchase replacements for.***

## COMMON CAUSES

Hand injuries account for approximately 1 in 4 of the injuries reported at Cowie YTD and analysis suggests that the causes of these are:

- Poor positioning of hands
- Lack of PPE use
- Ground conditions



## PREVENTATIVE MEASURES

- Be focused on your task
- Be mindful of where you are placing your hands
- Ensure that the tools / equipment you are using are fit for purpose and any safety devices are in good condition and working as required
- Is the PPE worn suitable for the task?

## 12 COMMITMENTS

- I will be fit and focused. Safety is a full time job!
- For any task, we will own it, know it, control it and watch it.
- I will raise any concerns or risks immediately.
- I will always prioritise safety over production.

***“Safety is a Core Value and Business Priority”***



Supervisor  
Crew  
Talk

**West Fraser**