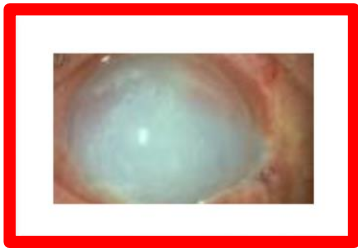


Eyewash Safety

Did You Know?

If you come across a eyewash station that is unusable, it is in your best interest to take the time and clean it out. **Why?** Take a minute and walk through the following scenario, Close your eyes right now and Imagine and Think!

1. IMAGINE : You have just splashed a chemical into your eyes and everything goes black and your eyes look like this



2. THINK : Could I find my nearest Eye Wash and is it ready to use?



DON'T WAIT, DO IT NOW! Always know where the eye wash stations are before you need to know and ensure they are clean and free from obstructions!



The Risk

How to be Prepared?

- ✓ Everyone must take immediate corrective actions to rectify hazards or unsafe conditions.
- ✓ Emergency eyewash facilities must be maintained in a clean and serviceable manner at all times.
- ✓ They are to be inspected and documented at appropriate intervals to ensure the unit is in an operationally ready condition.



What to Do?

If you get a chemical in your eye **IMMEDIATELY** go to the nearest Eyewash Shower and start flushing with water.

Hold your eyes wide open with your thumbs and index fingers and rotate eyes in all directions.

Stay there for a minimum of 30 minutes and have someone contact First Aid!

Safety First

At West Fraser, we work in High Risk environments and we always need to stay focused on our task at hand and know what to do if an emergency arises.

“safety is a core value and business priority”



West Fraser