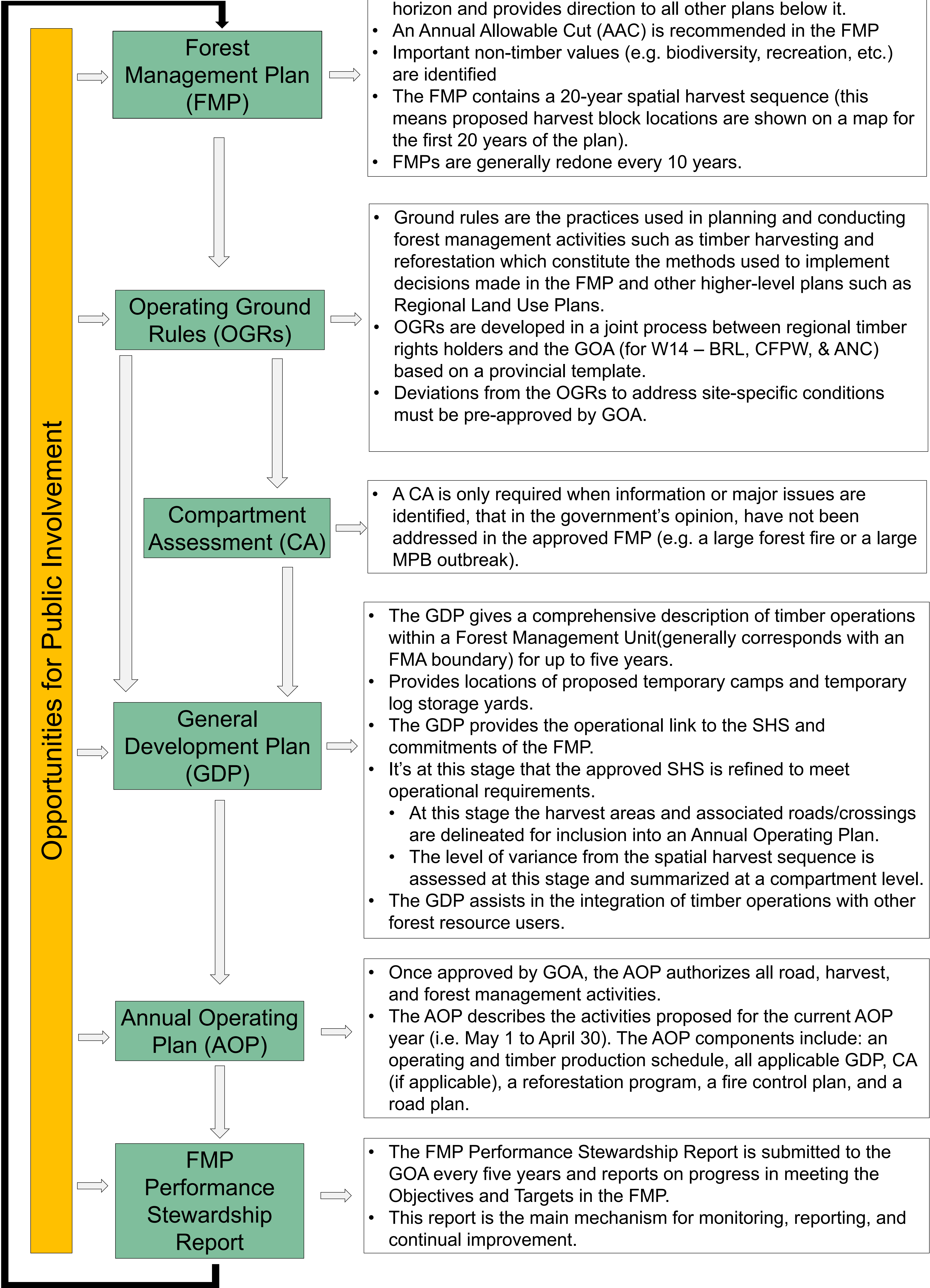


2023 Planning Activities

Planning Levels



2023 Planning Activities

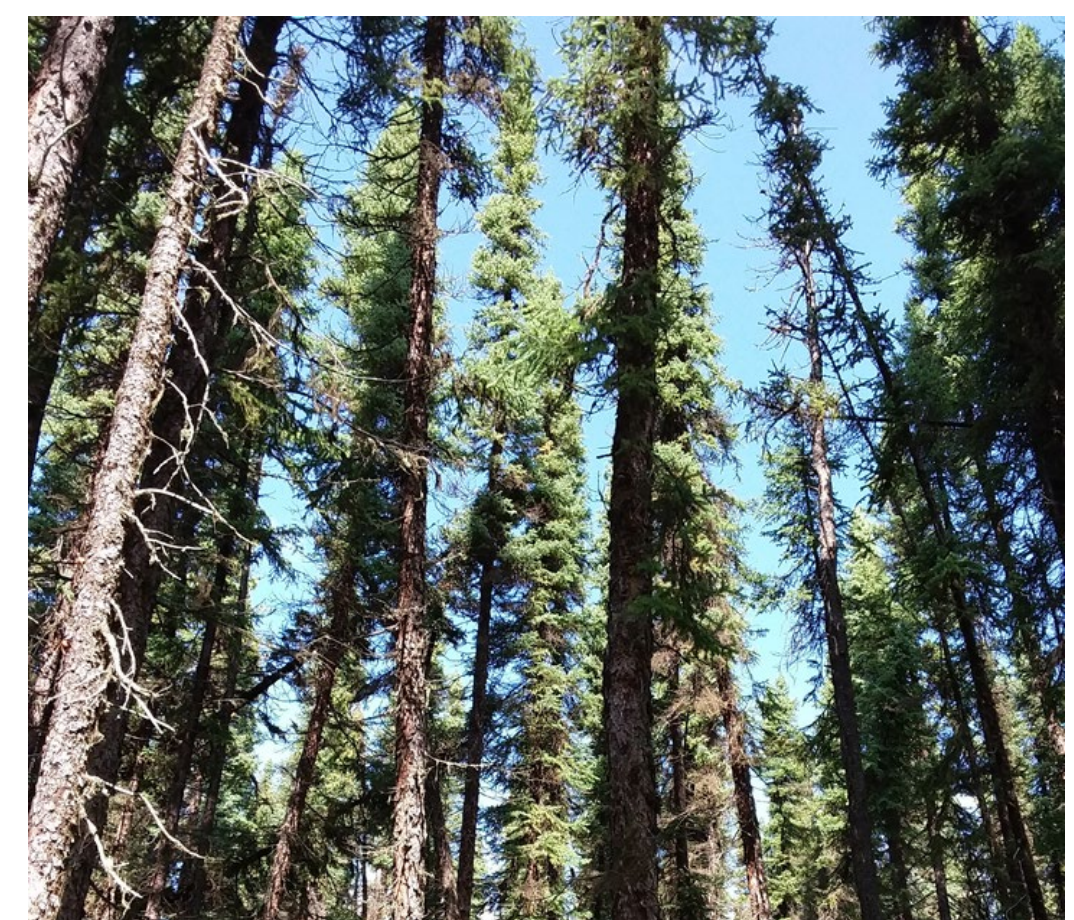
Cutblock Layout

Why do we lay out planned cutblocks prior to timber harvesting?

- Layout field crews use design plans, training, and experience to determine cutblock boundaries, roads, and streams.
- Purpose is to ensure that block boundaries and roads are properly flagged and clearly visible. These flagged boundaries are used by equipment operators during harvesting to ensure that activities occur in the correct areas.
- Properly flagged boundaries and roads reduce the chance of trespass or environmental impact during harvest and silviculture operations.
- Ensures protection of high-risk areas such as streams & riparian areas, protected historical resources, private land, and certain wildlife habitats.
- Our #1 priority is to ensure that all legal requirements for harvesting are followed.

How much Layout is planned for 2023

- Blue Ridge Lumber plans to layout roughly 1.1 million m³ of timber. About 5500 ha for future harvest operations throughout Blue Ridge Lumber's FMA and timber quota areas.



Mountain Pine Beetle

Blue Ridge lumber has two programs for controlling and limiting the spread of the Mountain Pine Beetle (MPB).

Containment Baiting

- Containment baiting around our log yards in order to monitor and contain MPB to prevent damage to pine trees in adjacent forests.
- Each year BRL staff hang pheromones around our log yard and remote satellite yards on beetle traps in the beginning of July which attract the Mountain Pine Beetle
- The beetle are trapped at the base. BRL staff collect and destroy the beetles on weekly base from the beginning of June through mid Sept

Orchard/Progeny Sites

- Protection of seed orchards and progeny test sites – provides localized protection to high-value pine trees
- Repellant pouches are put up at 15m intervals in a grid laid pattern at 2-3m height on the north side of the trees throughout the 5 progeny sites and at the BRL Lodgepole Pine Seed Orchard.



2023 Planning Activities

Permanent Sample Plots

Blue Ridge Lumber has made a commitment to establish a long-term growth and yield program for their Forest Management Area. This program is used to assess the growth and changes of the forest resources, and in turn help us determine the sustainable harvest levels. One of the ways we do this is by using Permanent Sample Plots (PSPs).

The growth and changes to the stand over time can be assessed by taking periodic measurements (roughly every 5-10 years) of the same trees within a defined plot. BRL has close to 300 plots scattered across the Forest Management Area. Height, diameter, condition of the trees, and much more is taken at the time of the measurements. PSPs will help determine our Annual Allowable Cut and other Sustainable Management Practices as we can determine how the trees in a variety of natural and maintained ecosites are growing and changing over time.

