

Spray Lake Sawmills

Modeled Visual Quality

The Visual Quality Strategy's objective is to plan forest activities that are compatible with the character of the FMA landscape. Potentially high visual sensitivity areas have been inventoried and will be consulted on at the operational planning level to address appropriate site specific visual mitigation strategies.

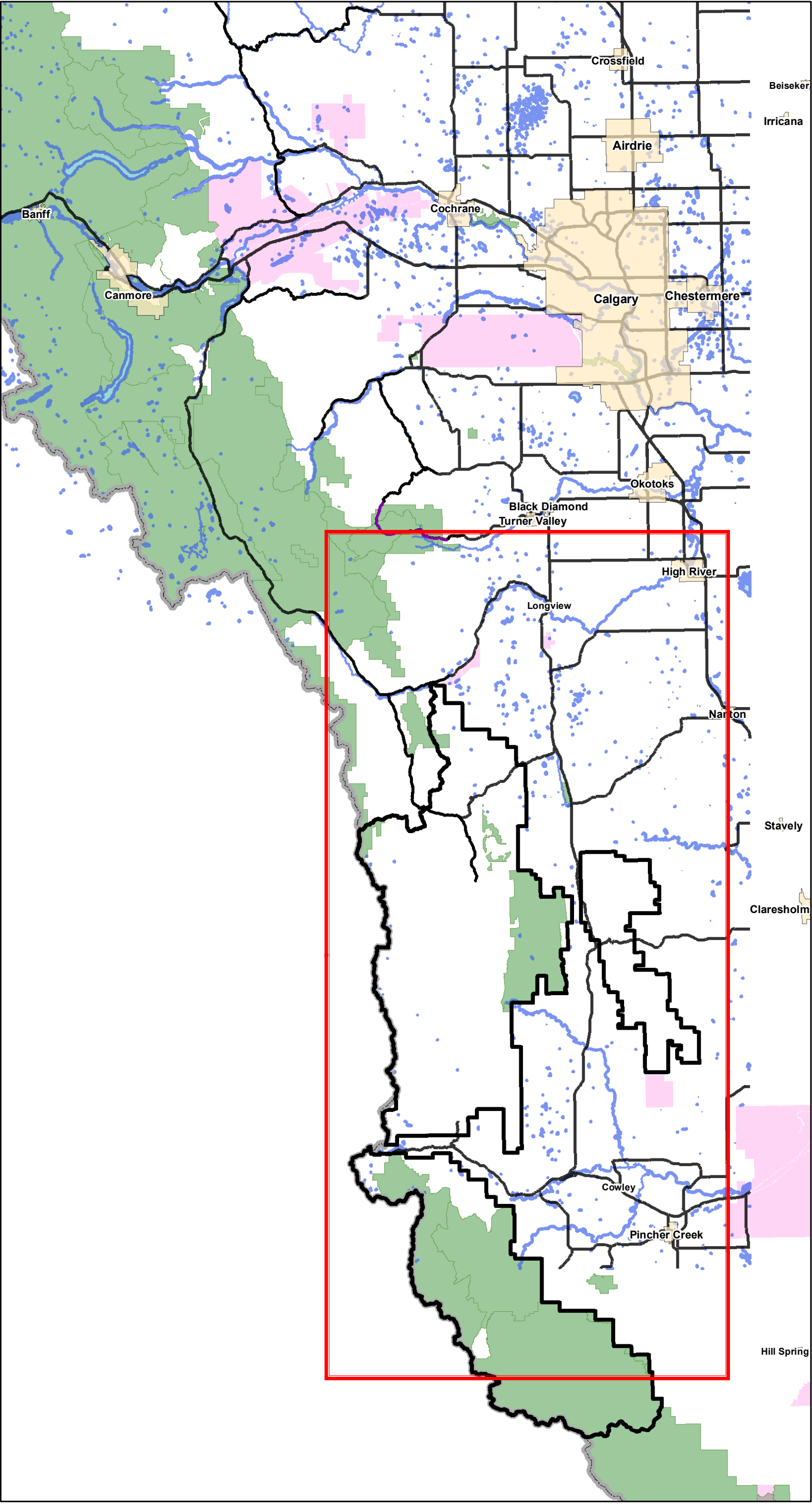
The high visual sensitivity areas were computer generated. Mitigation measures will be identified to reduce the potential visual impacts of harvesting for field verified, high visual sensitivity areas.

Legend

- △ Mountains
- Roadways
- Rivers
- Waterbodies
- Alberta Provincial Boundary
- Urban Centres
- Parks and Protected Areas
- First Nation Reserve
- Defined Forest Area Boundary
- Locations of Interest

Visual Quality Assessment

- Background - High (> 5 km)
- Foreground - High (0 to 0.8 km)
- Midground - High (0.8 to 5 km)



Spray Lake Sawmills

Prepared by: Forcorp Solutions Inc.
Date prepared: December 6, 2024
Projection: UTM 11N - NAD83
Data Source: AltaLIS, GoA, Spray Lake Sawmills, Forcorp Solutions, Inc.

