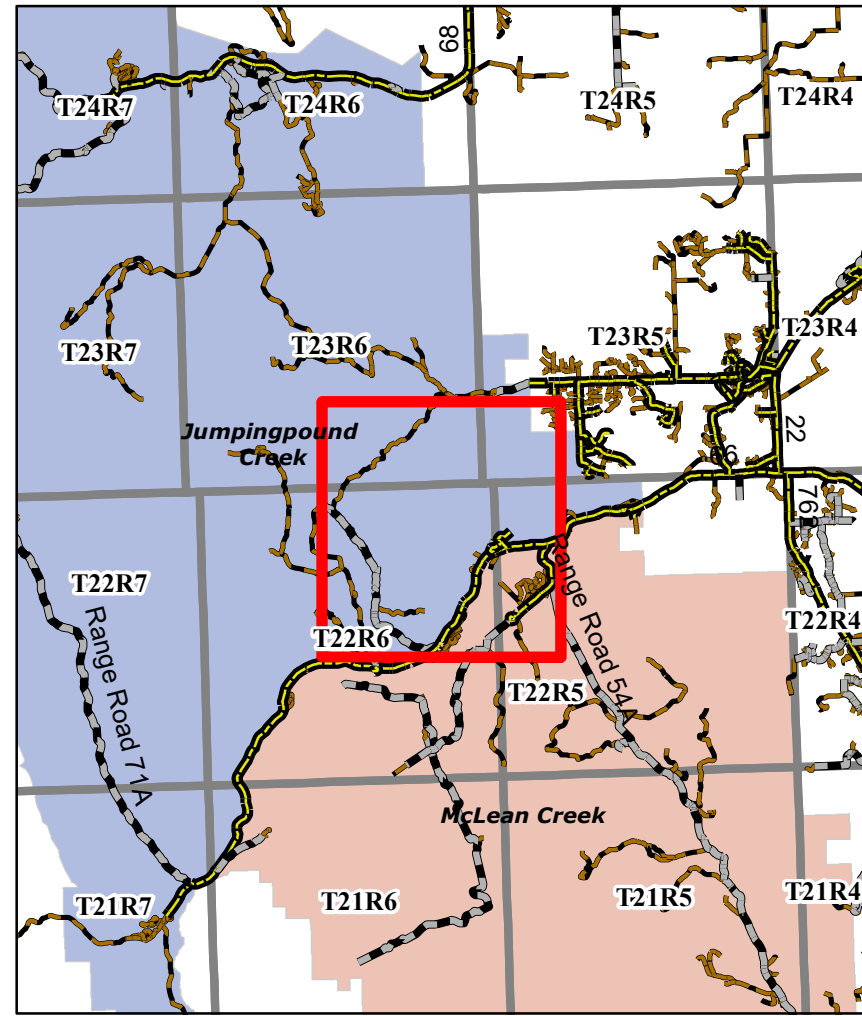
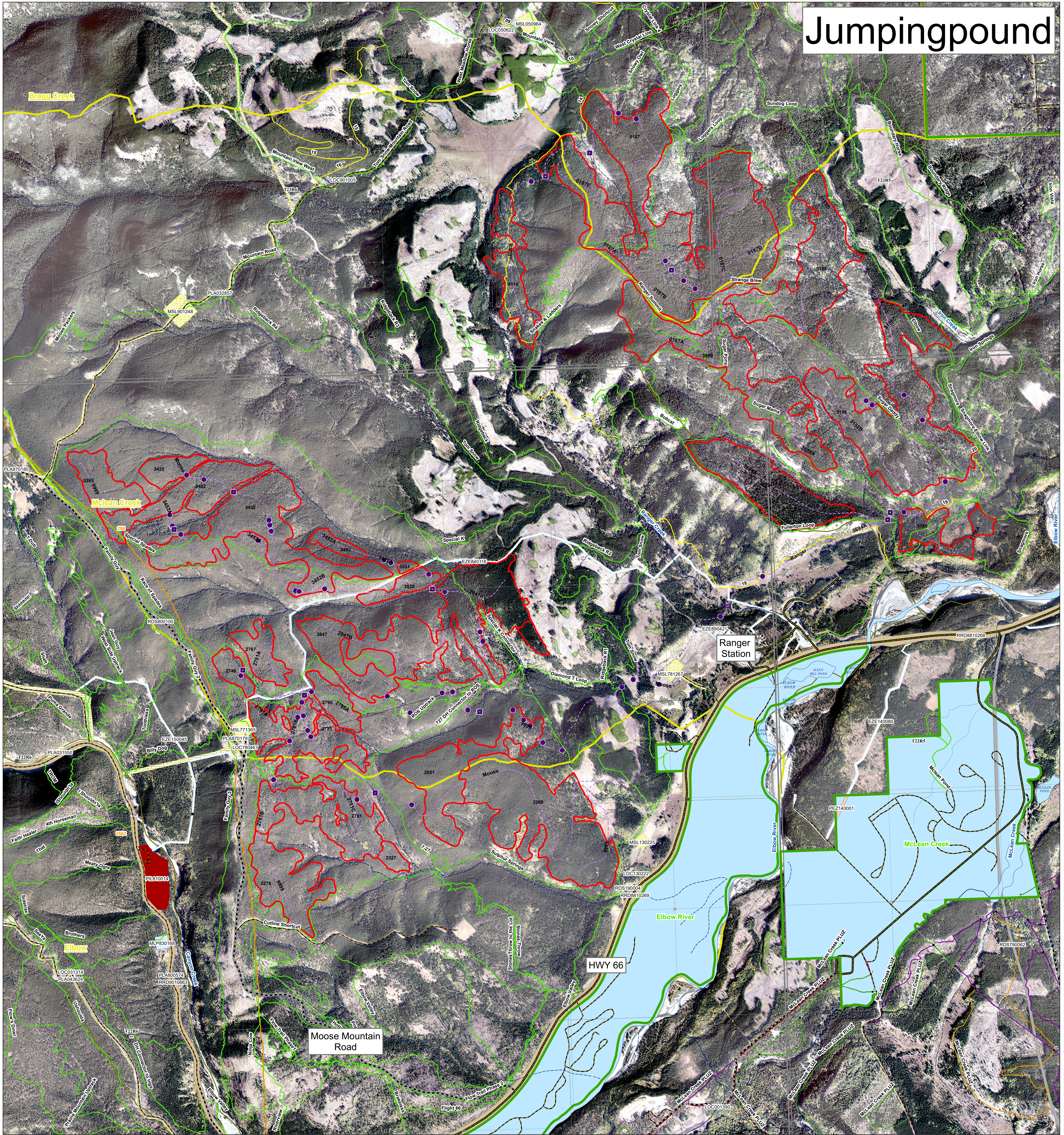


Jumpingpound



FMA ■ FMA Transportation — Transportation — Road - Paved — Road - Gravel — Truck Trail — Cutline/Trail — Railway — Other Trails ● Access Control	Hydrography — Hydrography — Ephemeral — Intermittent — Transitional — Small Permanent — Large Permanent Points of Interest ■ Cultural ■ Grazing ■ Recreation ■ Vegetation ■ Water ■ Wildlife	Cutblocks ■ Harvested, Complete ■ In Progress; Laid Out ■ Preliminary ■ Retention Roads — Planned — Laid Out — Constructed	Planned Crossings ■ Bridge; ACTV, MOD; PLAN, MOD ■ Box Crib ■ Half Pipe Planned In Stream ■ Cordoury ■ Logfill ■ Culvert ■ X Drain Active Crossings ■ Bridge; ACTV, MOD ■ Box Crib ■ Half Pipe Active In Stream ■ Culvert ■ Cordoury ■ Logfill ■ X Drain	Stakeholder Landuse ■ License of Occupation ■ Mineral Surface Lease ■ Pipeline Agreement ■ Easement ■ Forestry Road ■ Misc. Permit ■ Pipeline Installation Lease ■ Parks Mineral Surface Lease ■ Roadway ■ Surface Material Lease ■ REA Easement ■ Right-of-Entry Agreement ■ Country Road ■ Surface Mineral Lease ■ Vegetation Control Easement ■ TP&R Easement ■ TP&R License of Occupation	■ Ecological Reserve 2021 ■ Heritage Rangeland 2021 ■ Natural Area 2021 ■ National Park 2021 ■ Provincial Park 2021 ■ Provincial Recreation Area 2021 ■ Wilderness Area 2021 ■ Wilderness Park 2021 ■ Wildland Provincial Park 2021 ■ IR 2020	■ Grazing Allotments ■ Grazing Leases ■ Traps ■ Fence Lines - Internal ■ SLS PSPs - Buffers ■ Gov PSPs - Buffers Designated Trails — Shared Use Road — Truck Trail (4x4) — Quad — Single Track — Snow Vehicle Trails — KC Trails — NM Designated Trails — NM Proposed Trails
--	---	--	---	---	--	---

1:10,000

0 0.175 0.35 0.7 1.05 1.4
Kilometers

Map Title: Jumpingpound
Created By: Spray Lake Sawmills (1980) Ltd
Date Created: March 20, 2024
Author: Allen Mottet, RPF

Any duplication or distribution without permission is prohibited.
This map was created using available information and Spray Lake Sawmills (1980) Ltd makes no warranty for the accuracy or completeness of this map.