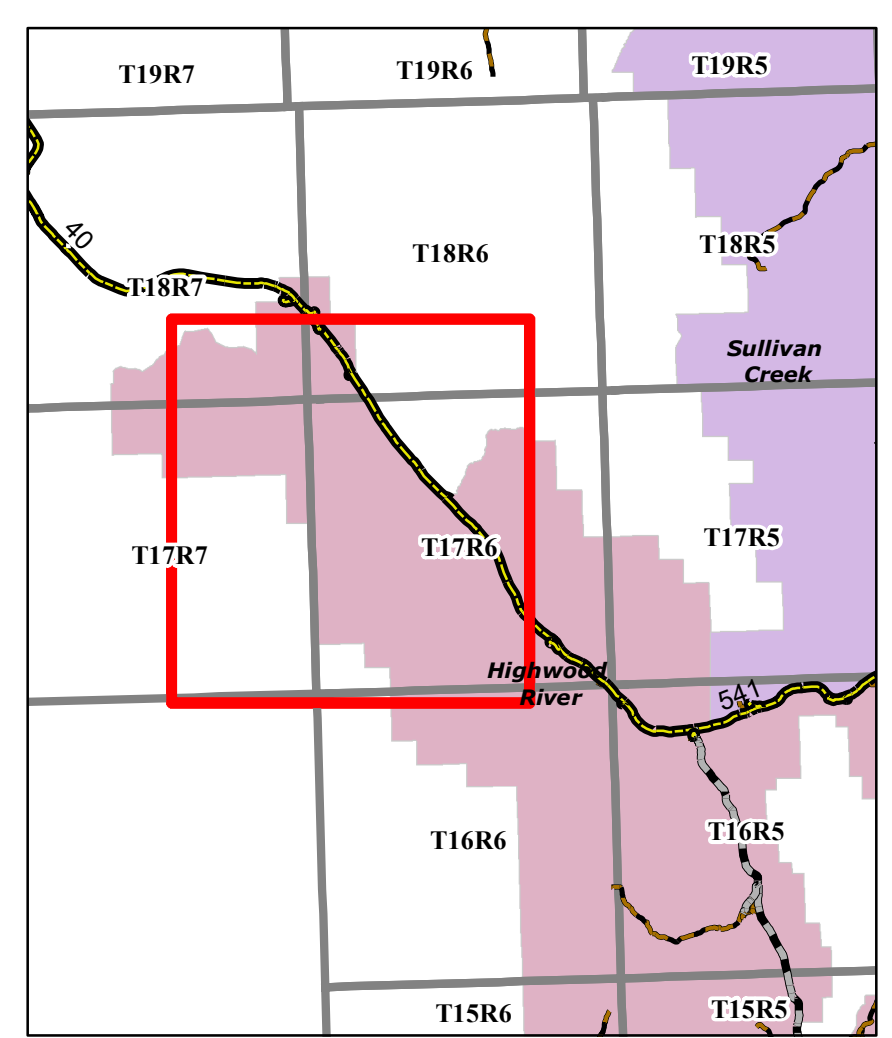
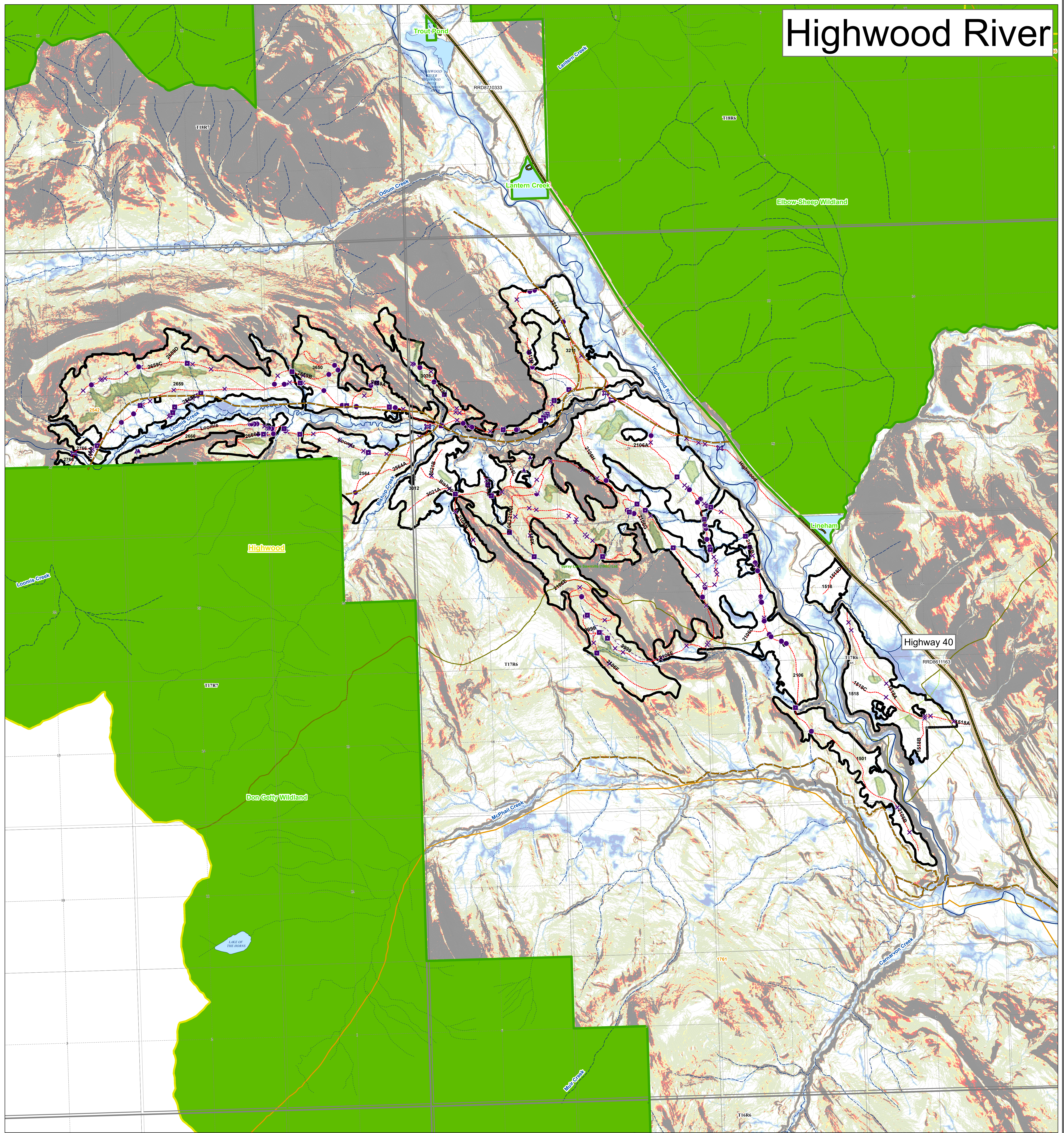
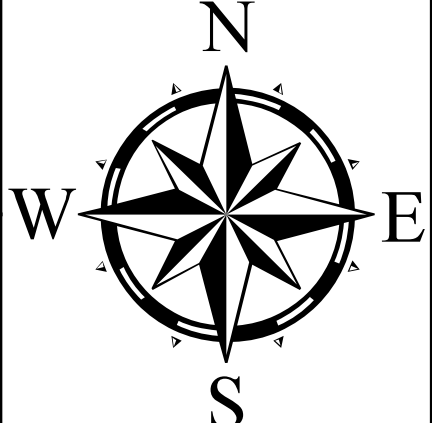



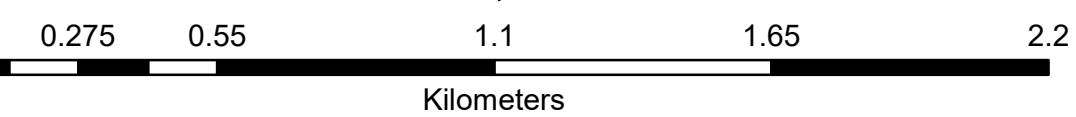
# Highwood River



<b>FMA</b> FMA <b>Transportation</b> Transportation Road - Paved Road - Gravel Truck Trail Cutline/Trail Railway Other Trails Access Control	<b>Hydrography</b> Hydrography Ephemeral Intermittent Transitional Small Permanent Large Permanent <b>Points of Interest</b> Cultural Grazing; Grazing Recreation Vegetation Water Wildlife	<b>Cutblocks</b> Harvested, Complete In Progress; Laid Out Preliminary Retention <b>Roads</b> Planned Laid Out Constructed	<b>Planned Crossings</b> Bridge; ACTV, MOD; PLAN, MOD Box Crib Half Pipe <b>Planned In Stream</b> Cordoury Logfill Culvert X Drain <b>Active Crossings</b> Bridge; ACTV, MOD Box Crib Half Pipe <b>Active In Stream</b> Culvert Cordoury Logfill X Drain	<b>Stakeholder Landuse</b> License of Occupation Mineral Surface Lease Pipeline Agreement Easement Forestry Road Misc. Permit Pipeline Installation Lease Parks Mineral Surface Lease Roadway Surface Material Lease REA Easement Right-of-Entry Agreement Country Road Surface Mineral Lease Vegetation Control Easement TP&R Easement TP&R License of Occupation	<b>Ecological Reserve 2021</b> Heritage Rangeland 2021 Natural Area 2021 National Park 2021 Provincial Park 2021 Provincial Recreation Area 2021 Wilderness Area 2021 Wilderness Park 2021 Wildland Provincial Park 2021 IR 2020	<b>Grazing Allotments</b> Grazing Leases Traplines Fence Lines - Internal SLS PSPs - Buffers Gov PSPs - Buffers <b>Designated Trails</b> Shared Use Road Truck Trail (4x4) Quad Single Track Snow Vehicle Trails KC Trails
--	--	--	---	---	---	--



1:15,000



0 0.275 0.55 1.1 1.65 2.2  
Kilometers

Map Title: Highwood  
Created By: Spray Lake Sawmills (1980) Ltd  
Date Created: March 20, 2024  
Author: Allen Mottet, RPF

Any duplication or distribution without permission is prohibited.  
This map was created using available information and Spray Lake Sawmills (1980) Ltd makes no warranty for the accuracy or completeness of this map.